

For Research Use Only

# WISP3 Polyclonal antibody

Catalog Number: 26406-1-AP



## Basic Information

<b>Catalog Number:</b> 26406-1-AP	<b>GenBank Accession Number:</b> BC105941	<b>Purification Method:</b> Antigen affinity purification
<b>Size:</b> 150ul , Concentration: 400 ug/ml by Nanodrop;	<b>GeneID (NCBI):</b> 8838	<b>Recommended Dilutions:</b> WB 1:500-1:3000 IHC 1:50-1:500 IF/ICC 1:50-1:500
<b>Source:</b> Rabbit	<b>UNIPROT ID:</b> O95389	
<b>Isotype:</b> IgG	<b>Full Name:</b> WNT1 inducible signaling pathway protein 3	
<b>Immunogen Catalog Number:</b> AG23999	<b>Observed MW:</b> 39-42 kDa	

## Applications

**Tested Applications:**  
WB, IHC, IF/ICC, ELISA

**Species Specificity:**  
human

**Note-IHC: suggested antigen retrieval with TE buffer pH 9.0; (\*) Alternatively, antigen retrieval may be performed with citrate buffer pH 6.0**

**Positive Controls:**

**WB:** Caco-2 cells, COLO 320 cells, HeLa cells, HepG2 cells

**IHC:** human colon cancer tissue,

**IF/ICC:** MCF-7 cells,

## Background Information

WISP3, also known as CCN6. Localized to the Mitochondria, and It is reported that CCN6 is located in the nucleus of breast cancer (PMID: 21262769). It is mainly expressed in adult kidney, testis and fetal kidney, and weakly expressed in placenta, ovary, prostate and small intestine (PMID: 9843955, PMID: 10471507). This gene is overexpressed in colon tumors, and it may be located downstream of WNT1 signaling pathway related to malignant transformation. Mutations of this gene are associated with progressive pseudorheumatoid dysplasia, an autosomal recessive skeletal disorder, indicating that the gene is essential for normal postnatal skeletal growth and cartilage homeostasis. Also it plays an important role in mitochondrial electron transfer and mitochondrial respiration, and may be important in bone growth and cartilage homeostasis after normal birth through its regulation of mitochondrial function (PMID: 27252383, PMID: 10471507). The calculated molecular weight of WISP3 is 39 kDa, and this antibody can recognize the 41 kDa isoform of WISP3.

## Storage

**Storage:**

Store at -20°C. Stable for one year after shipment.

**Storage Buffer:**

PBS with 0.02% sodium azide and 50% glycerol pH 7.3.

Aliquoting is unnecessary for -20°C storage

\*\*\* 20ul sizes contain 0.1% BSA

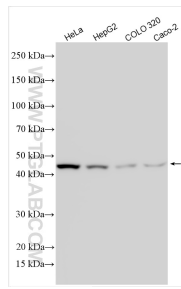
For technical support and original validation data for this product please contact:

T: 1 (888) 4PTGLAB (1-888-478-4522) (toll free in USA), or 1(312) 455-8498 (outside USA)

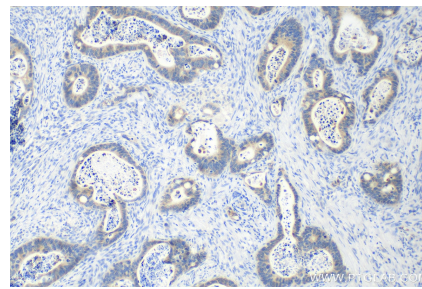
E: proteintech@ptglab.com  
W: ptglab.com

This product is exclusively available under Proteintech Group brand and is not available to purchase from any other manufacturer.

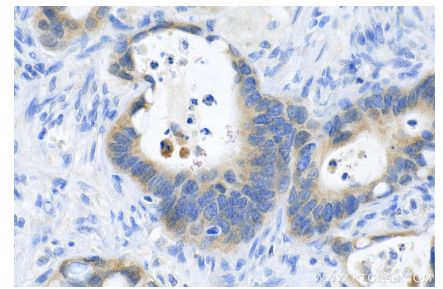
## Selected Validation Data



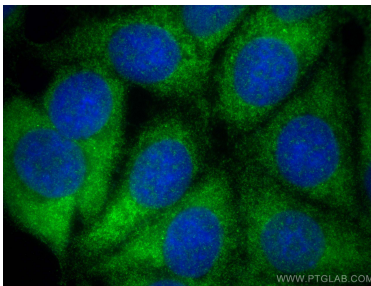
Various lysates were subjected to SDS PAGE followed by western blot with 26406-1-AP (WISP3 antibody) at dilution of 1:1500 incubated at room temperature for 1.5 hours.



Immunohistochemical analysis of paraffin-embedded human colon cancer tissue slide using 26406-1-AP (WISP3 antibody) at dilution of 1:200 (under 10x lens). Heat mediated antigen retrieval with Tris-EDTA buffer (pH 9.0).



Immunohistochemical analysis of paraffin-embedded human colon cancer tissue slide using 26406-1-AP (WISP3 antibody) at dilution of 1:200 (under 40x lens). Heat mediated antigen retrieval with Tris-EDTA buffer (pH 9.0).



Immunofluorescent analysis of (-20°C Methanol) fixed MCF-7 cells using WISP3 antibody (26406-1-AP) at dilution of 1:200 and Multi-rAb CoraLite @ Plus 488-Goat Anti-Rabbit Recombinant Secondary Antibody (H+L) (RGAR002).