

For Research Use Only

CHM Polyclonal antibody

Catalog Number: 26251-1-AP



Basic Information

Catalog Number: 26251-1-AP	GenBank Accession Number: BC063522	Purification Method: Antigen affinity purification
Size: 150ul , Concentration: 450 ug/ml by Nanodrop;	GeneID (NCBI): 1121	Recommended Dilutions: WB 1:500-1:3000 IHC 1:50-1:500 IF/ICC 1:200-1:800
Source: Rabbit	UNIPROT ID: P24386	
Isotype: IgG	Full Name: choroideremia (Rab escort protein 1)	
Immunogen Catalog Number: AG23166	Observed MW: 95 kDa	

Applications

Tested Applications: WB, IHC, IF/ICC, ELISA	Positive Controls: WB : A431 cells, Caco-2 cells, HEK-293T cells, HeLa cells IHC : mouse placenta tissue, IF/ICC : A431 cells,
Species Specificity: human	
Note-IHC: suggested antigen retrieval with TE buffer pH 9.0; (*) Alternatively, antigen retrieval may be performed with citrate buffer pH 6.0	

Background Information

CHM (Choroideremia protein) is also named as Rab escort protein 1 (REP-1), TCD and Rab proteins geranylgeranyltransferase component A 1. Choroideremia (CHM) is an X-linked recessive eye disease that is caused by null mutations in REP-1, a gene involved in the regulation of Rab GTPases and intracellular vesicular transport (PMID: 9067750, PMID: 16936131). REP-1 is involved in trafficking of Rab proteins in the cell. And REP-1 binds newly synthesized Rab proteins and presents them to the catalytic site of RabGGTase (PMID: 19427510). RAB-27 in several neurons, such as motor neurons at neuromuscular junctions, requires REP-1 for normal synaptic transmission responsible for aldicarb sensitivity (PMID: 19090809). REP-1 acts as a component of the protein complex. There are two similar Rab escort proteins (75% sequence identity): REP-1 and REP-2. A 95-kDa protein (previously designated component A and now called REP-1) is present (PMID: 8294464, PMID: 17140818).

Storage

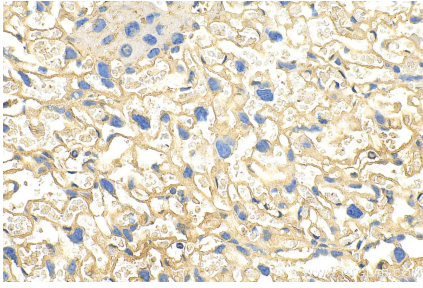
Storage:
Store at -20°C. Stable for one year after shipment.
Storage Buffer:
PBS with 0.02% sodium azide and 50% glycerol pH 7.3.
Aliquoting is unnecessary for -20°C storage

*** 20ul sizes contain 0.1% BSA

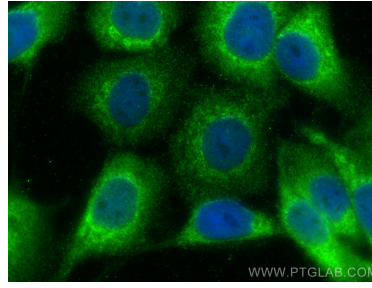
For technical support and original validation data for this product please contact:
T: 1 (888) 4PTGLAB (1-888-478-4522) (toll free in USA), or 1(312) 455-8498 (outside USA)
E: proteintech@ptglab.com
W: ptglab.com

This product is exclusively available under Proteintech Group brand and is not available to purchase from any other manufacturer.

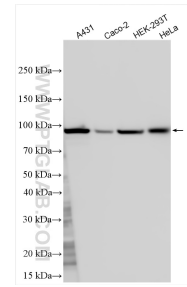
Selected Validation Data



Immunohistochemical analysis of paraffin-embedded mouse placenta tissue slide using 26251-1-AP (CHM antibody) at dilution of 1:200 (under 40x lens). Heat mediated antigen retrieval with Tris-EDTA buffer (pH 9.0).



Immunofluorescent analysis of (-20°C Methanol) fixed A431 cells using CHM antibody (26251-1-AP) at dilution of 1:400 and Multi-rAb CoraLite® Plus 488-Goat Anti-Rabbit Recombinant Secondary Antibody (H+L) (RGAR002).



Various lysates were subjected to SDS PAGE followed by western blot with 26251-1-AP (CHM antibody) at dilution of 1:1500 incubated at room temperature for 1.5 hours.