

For Research Use Only

# SOCS2 Polyclonal antibody

Catalog Number: 26206-1-AP

1 Publications



## Basic Information

<b>Catalog Number:</b> 26206-1-AP	<b>GenBank Accession Number:</b> BC010399	<b>Purification Method:</b> Antigen affinity purification
<b>Size:</b> 150ul , Concentration: 450 ug/ml by Nanodrop;	<b>GeneID (NCBI):</b> 8835	<b>Recommended Dilutions:</b> WB 1:500-1:3000
<b>Source:</b> Rabbit	<b>UNIPROT ID:</b> O14508	
<b>Isotype:</b> IgG	<b>Full Name:</b> suppressor of cytokine signaling 2	
<b>Immunogen Catalog Number:</b> AG24394	<b>Calculated MW:</b> 198 aa, 22 kDa	
	<b>Observed MW:</b> 20-23 kDa	

## Applications

<b>Tested Applications:</b> WB, ELISA	<b>Positive Controls:</b> WB : K-562 cells, PC-12 cells
<b>Cited Applications:</b> WB	
<b>Species Specificity:</b> human, rat	
<b>Cited Species:</b> human	

## Background Information

SOCS2 is the substrate-recognition component of a cullin-5-RING E3 ubiquitin-protein ligase complex (ECS complex, also named CRL5 complex), which mediates the ubiquitination and subsequent proteasomal degradation of target proteins, such as EPOR and GHR (PMID: 11781573; 21980433; 25505247; 31182716; 34857742).

## Notable Publications

Author	Pubmed ID	Journal	Application
Zhitao Dong	39307915	Cancer Rep (Hoboken)	WB

## Storage

**Storage:**  
Store at -20°C. Stable for one year after shipment.  
**Storage Buffer:**  
PBS with 0.02% sodium azide and 50% glycerol pH 7.3.  
Aliquoting is unnecessary for -20°C storage

\*\*\* 20ul sizes contain 0.1% BSA

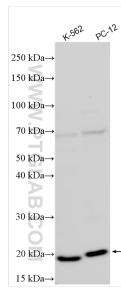
For technical support and original validation data for this product please contact:

T: 1 (888) 4PTGLAB (1-888-478-4522) (toll free in USA), or 1(312) 455-8498 (outside USA)

E: [proteintech@ptglab.com](mailto:proteintech@ptglab.com)  
W: [ptglab.com](http://ptglab.com)

This product is exclusively available under Proteintech Group brand and is not available to purchase from any other manufacturer.

## Selected Validation Data



Various lysates were subjected to SDS PAGE followed by western blot with 26206-1-AP (SOCS2 antibody) at dilution of 1:1500 incubated at room temperature for 1.5 hours.