

For Research Use Only

NBCe2 Polyclonal antibody

Catalog Number: 26150-1-AP **2 Publications**



Basic Information

Catalog Number: 26150-1-AP	GenBank Accession Number: BC109221	Purification Method: Antigen affinity purification
Size: 150ul , Concentration: 400 ug/ml by Nanodrop;	GeneID (NCBI): 57835	Recommended Dilutions: IHC 1:50-1:500 IF/ICC 1:50-1:500
Source: Rabbit	UNIPROT ID: Q9BY07	
Isotype: IgG	Full Name: solute carrier family 4, sodium bicarbonate cotransporter, member 5	
Immunogen Catalog Number: AG23558	Observed MW: 108-127 kDa	

Applications

Tested Applications: IHC, IF/ICC, ELISA	Positive Controls: IHC : human liver cancer tissue, mouse kidney tissue IF/ICC : HepG2 cells,
Cited Applications: WB	
Species Specificity: Human, Mouse	
Cited Species: human, mouse	

Note-IHC: suggested antigen retrieval with TE buffer pH 9.0; (*) Alternatively, antigen retrieval may be performed with citrate buffer pH 6.0

Background Information

NBCe2, also named as SLC4A5 and NBC4, belongs to the anion exchanger (TC 2.A.31) family. NBCe2 mediates electrogenic Na⁺:HCO₃⁻ transport, and can operate in both a 1:2, and 1:3 manner, but the transport stoichiometry as well as directionality have not been defined for the renal NBCe2. The expression of NBCe2 has been reported in nearly all kidney nephron segments and CDs, indicating that some species-specificity might be present (PMID: 32547422). NBCe2 has 8 isoforms with the molecular mass of 108-127 kDa.

Notable Publications

Author	Pubmed ID	Journal	Application
Marina Giannaki	36012235	Int J Mol Sci	WB
Rei Morikawa	39317184	Neuron	WB

Storage

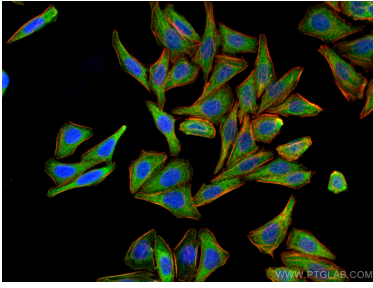
Storage:
Store at -20°C. Stable for one year after shipment.
Storage Buffer:
PBS with 0.02% sodium azide and 50% glycerol pH 7.3.
Aliquoting is unnecessary for -20°C storage

*** 20ul sizes contain 0.1% BSA

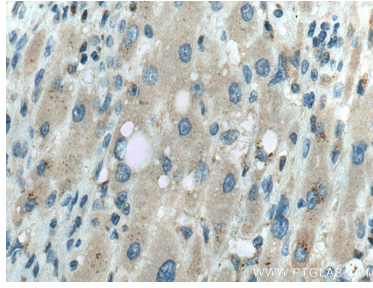
For technical support and original validation data for this product please contact:
T: 1 (888) 4PTGLAB (1-888-478-4522) (toll free in USA), or 1(312) 455-8498 (outside USA)
E: proteintech@ptglab.com
W: ptglab.com

This product is exclusively available under Proteintech Group brand and is not available to purchase from any other manufacturer.

Selected Validation Data



Immunofluorescent analysis of (-20°C Ethanol) fixed HepG2 cells using NBCe2 antibody (26150-1-AP) at dilution of 1:200 and CoraLite®488-Conjugated Goat Anti-Rabbit IgG(H+L).



Immunohistochemical analysis of paraffin-embedded human liver cancer tissue slide using 26150-1-AP (NBCe2 antibody) at dilution of 1:200 (under 40x Lens). Heat mediated antigen retrieval with Tris-EDTA buffer (pH 9.0).