

For Research Use Only

# G6PC Polyclonal antibody

Catalog Number: 25771-1-AP **2 Publications**



## Basic Information

<b>Catalog Number:</b> 25771-1-AP	<b>GenBank Accession Number:</b> BC136369	<b>Purification Method:</b> Antigen affinity purification
<b>Size:</b> 150ul, Concentration: 700 µg/ml by Nanodrop and 220 µg/ml by Bradford method using BSA as the standard;	<b>GeneID (NCBI):</b> 2538	<b>Recommended Dilutions:</b> WB 1:1000-1:6000
<b>Source:</b> Rabbit	<b>UNIPROT ID:</b> P35575	
<b>Isotype:</b> IgG	<b>Full Name:</b> glucose-6-phosphatase, catalytic subunit	
<b>Immunogen Catalog Number:</b> AG22683	<b>Observed MW:</b> 42 kDa	

## Applications

<b>Tested Applications:</b> WB, ELISA	<b>Positive Controls:</b> WB : HepG2 cells, L02 cells, rat liver tissue
<b>Cited Applications:</b> WB	
<b>Species Specificity:</b> human, rat	
<b>Cited Species:</b> mouse	

## Background Information

Glucose-6-phosphatase- $\alpha$  (G6PC) is a key enzyme in glucose homeostasis that catalyzes the hydrolysis of glucose-6-phosphate to glucose and phosphate in the terminal step of gluconeogenesis and glycogenolysis. G6PC activity is restricted to the liver, the kidney cortex, and the small intestine and confers on these three organs the capacity to release glucose into the systemic circulation (PMID: 21983240). The encoded enzyme is anchored to the ER by nine transmembrane helices with the amino (N)-terminus in the lumen and the carboxyl (C)-terminus in the cytoplasm (PMID: 15542400).

## Notable Publications

Author	Pubmed ID	Journal	Application
Jianglan Long	38834117	Int J Biol Macromol	WB
Yuzuru Iizuka	37918450	J Nutr Biochem	WB

## Storage

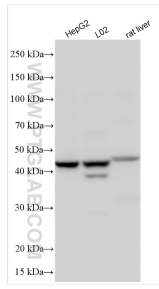
**Storage:**  
Store at -20°C. Stable for one year after shipment.  
**Storage Buffer:**  
PBS with 0.02% sodium azide and 50% glycerol pH 7.3.  
Aliquoting is unnecessary for -20°C storage

\*\*\* 20ul sizes contain 0.1% BSA

For technical support and original validation data for this product please contact:  
T: 1 (888) 4PTGLAB (1-888-478-4522) (toll free in USA), or 1(312) 455-8498 (outside USA)  
E: proteintech@ptglab.com  
W: ptglab.com

This product is exclusively available under Proteintech Group brand and is not available to purchase from any other manufacturer.

## Selected Validation Data



Various lysates were subjected to SDS PAGE followed by western blot with 25771-1-AP (G6PC antibody) at dilution of 1:3000 incubated at room temperature for 1.5 hours.