

For Research Use Only

ZCCHC2 Polyclonal antibody

Catalog Number: 25741-1-AP



Basic Information

Catalog Number: 25741-1-AP	GenBank Accession Number: BC006340	Purification Method: Antigen affinity purification
Size: 150ul , Concentration: 1200 ug/ml by Nanodrop;	GeneID (NCBI): 54877	Recommended Dilutions: IP 0.5-4.0 ug for 1.0-3.0 mg of total protein lysate
Source: Rabbit	UNIPROT ID: Q9C0B9	
Isotype: IgG	Full Name: zinc finger, CCHC domain containing 2	
Immunogen Catalog Number: AG22744	Calculated MW: 1178 aa, 126 kDa	
	Observed MW: 150 kDa	

Applications

Tested Applications: IP, ELISA	Positive Controls: IP : HeLa cells,
Species Specificity: human	

Background Information

ZCCHC2 is a poorly characterized protein of 126 kDa with long intrinsically disordered regions, a PX domain, and a CCHC-type zinc-finger (ZnF) domain. ZCCHC2 is distantly related to ZCCHC14 but lacks the SAM domain that is known to interact with the CNGGN pentaloop in 1E and PRE. ZCCHC2 is a critical host factor for K5. ZCCHC2 recruits the terminal nucleotidyl transferase TENT4 to elongate poly(A) tails with mixed sequences, delaying deadenylation. The observed molecular weight is consistent with what has been described in the literature (PMID: 37413987).

Storage

Storage:
Store at -20°C. Stable for one year after shipment.
Storage Buffer:
PBS with 0.02% sodium azide and 50% glycerol pH 7.3.
Aliquoting is unnecessary for -20°C storage

*** 20ul sizes contain 0.1% BSA

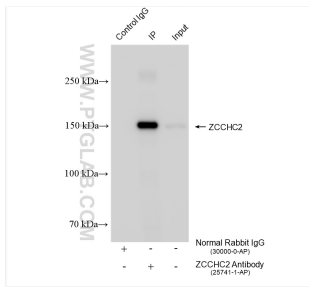
For technical support and original validation data for this product please contact:

T: 1 (888) 4PTGLAB (1-888-478-4522) (toll free in USA), or 1(312) 455-8498 (outside USA)

E: proteintech@ptglab.com
W: ptglab.com

This product is exclusively available under Proteintech Group brand and is not available to purchase from any other manufacturer.

Selected Validation Data



IP result of anti-ZCCHC2 (IP:25741-1-AP, 4ug;
Detection:25741-1-AP 1:500) with HeLa cells lysate
1800 ug.