

For Research Use Only

RPUSD1 Polyclonal antibody

Catalog Number: 25578-1-AP



Basic Information

Catalog Number:

25578-1-AP

Size:

150ul, Concentration: 500 ug/ml by Nanodrop;

Source:

Rabbit

Isotype:

IgG

Immunogen Catalog Number:

AG22314

GenBank Accession Number:

BC011783

GeneID (NCBI):

113000

UNIPROT ID:

Q9UJJ7

Full Name:

RNA pseudouridylate synthase domain containing 1

Calculated MW:

312 aa, 35 kDa

Observed MW:

34-35 kDa

Purification Method:

Antigen affinity purification

Recommended Dilutions:

WB 1:1000-1:4000

IP 0.5-4.0 ug for 1.0-3.0 mg of total protein lysate

IF/ICC 1:50-1:500

Applications

Tested Applications:

WB, IF/ICC, IP, ELISA

Species Specificity:

human

Positive Controls:

WB : U2OS cells,

IP : HeLa cells,

IF/ICC : HeLa cells,

Background Information

RPUSD1 (RNA pseudouridylate synthase domain-containing protein 1) also known as RLUC1 (Ribosomal large subunit pseudouridine synthase C-like protein), was significantly upregulated in HCC and expressed at higher levels in advanced stage or poorly differentiated HCC tissues (PMID: 36437949).

Storage

Storage:

Store at -20°C. Stable for one year after shipment.

Storage Buffer:

PBS with 0.02% sodium azide and 50% glycerol pH 7.3.

Aliquoting is unnecessary for -20°C storage

*** 20ul sizes contain 0.1% BSA

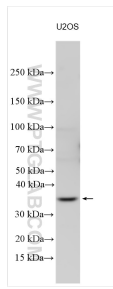
For technical support and original validation data for this product please contact:

T: 1 (888) 4PTGLAB (1-888-478-4522) (toll free in USA), or 1(312) 455-8498 (outside USA)

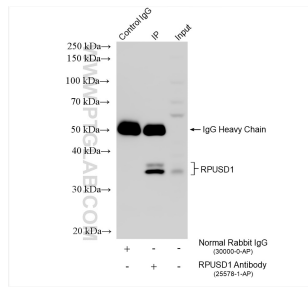
E: proteintech@ptglab.com
W: ptglab.com

This product is exclusively available under Proteintech Group brand and is not available to purchase from any other manufacturer.

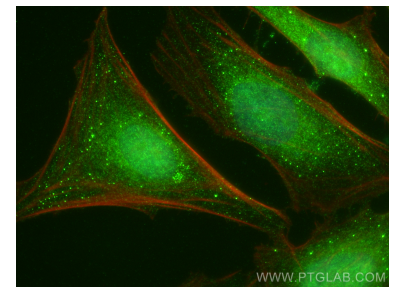
Selected Validation Data



Various lysates were subjected to SDS PAGE followed by western blot with 25578-1-AP (RPUSD1 antibody) at dilution of 1:2000 incubated at room temperature for 1.5 hours.



IP result of anti-RPUSD1 (IP:25578-1-AP, 4ug; Detection:25578-1-AP 1:500) with HeLa cells lysate 1760 ug.



Immunofluorescent analysis of (4% PFA) fixed HeLa cells using RPUSD1 antibody (25578-1-AP) at dilution of 1:200 and Multi-rAb CoraLite® Plus 488-Goat Anti-Rabbit Recombinant Secondary Antibody (H+L) (RGAR002), CL594-Phalloidin (red).