

For Research Use Only

TWIST1-specific Polyclonal antibody

Catalog Number: 25465-1-AP

Featured Product

180 Publications



Basic Information

Catalog Number:

25465-1-AP

Size:

150ul, Concentration: 650 ug/ml by Nanodrop;

Source:

Rabbit

Isotype:

IgG

Immunogen Catalog Number:

AG21924

GenBank Accession Number:

BC036704

GeneID (NCBI):

7291

UNIPROT ID:

Q15672

Full Name:

twist homolog 1 (Drosophila)

Calculated MW:

202 aa, 21 kDa

Observed MW:

25-30 kDa

Purification Method:

Antigen affinity purification

Recommended Dilutions:

WB 1:1000-1:4000

IP 0.5-4.0 ug for 1.0-3.0 mg of total

protein lysate

IHC 1:50-1:500

IF/ICC 1:300-1:1200

Applications

Tested Applications:

WB, IHC, IF/ICC, IP, ELISA

Cited Applications:

WB, IHC, IF, IP, CoIP, CHIP

Species Specificity:

human, mouse

Cited Species:

human, mouse, rat, zebrafish

Positive Controls:

WB : U-251 cells, Raji cells, A549 cells, SH-SY5Y cells, MDA-MB-231 cells, PC-3 cells

IP : MDA-MB-453s cells,

IHC : human liver cancer tissue, human breast cancer tissue, human pancreas cancer tissue

IF/ICC : L02 cells,

Note-IHC: suggested antigen retrieval with TE buffer pH 9.0; (*) Alternatively, antigen retrieval may be performed with citrate buffer pH 6.0

Background Information

Twist-related protein 1 (TWIST1), also named as BHLHA38, is 202 amino acid protein, which contains one bHLH domain. TWIST1 localizes in the nucleus and acts as a transcriptional regulator. TWIST1 inhibits monogenesis by sequestering E proteins and inhibits tans-activation by MEF2. TWIST1 is expressed in subset of mesodermal cells. The antibody reacts specifically with Twist1 protein. The calculated molecular weight of TWIST1 is 21 kDa, but the observed molecular weight is about 30 kDa due to the post-translational modification(PMID: 30733340).

Notable Publications

Author	Pubmed ID	Journal	Application
XIAOYUE FENG	34528694	Oncol Rep	WB
Yi-Fan Tan	36127329	Cell Death Discov	ChIP, WB
FANG YANG	34733365	Oncol Lett	WB

Storage

Storage:

Store at -20°C. Stable for one year after shipment.

Storage Buffer:

PBS with 0.02% sodium azide and 50% glycerol, pH7.3

Aliquoting is unnecessary for -20°C storage

***** 20ul sizes contain 0.1%BSA**

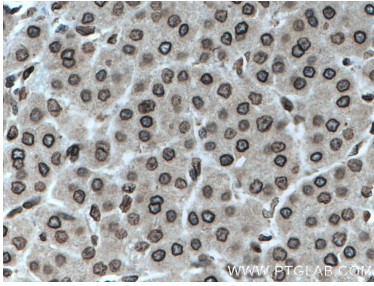
For technical support and original validation data for this product please contact:

T: 1 (888) 4PTGLAB (1-888-478-4522) (toll free in USA), or 1(312) 455-8498 (outside USA)

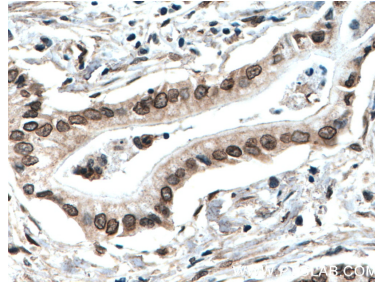
E: proteintech@ptglab.com
W: ptglab.com

This product is exclusively available under Proteintech Group brand and is not available to purchase from any other manufacturer.

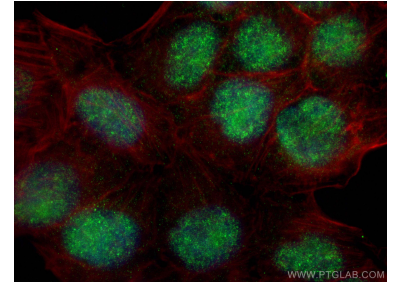
Selected Validation Data



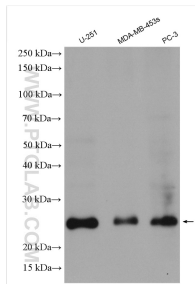
Immunohistochemical analysis of paraffin-embedded human liver cancer tissue slide using 25465-1-AP (TWIST1-specific antibody) at dilution of 1:200 (under 40x lens). Heat mediated antigen retrieval with Tris-EDTA buffer (pH 9.0).



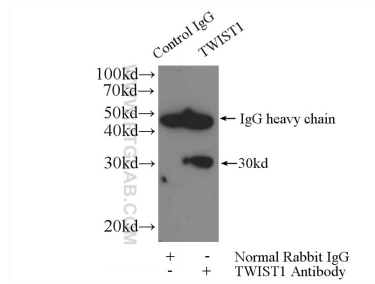
Immunohistochemical analysis of paraffin-embedded human pancreas cancer tissue slide using 25465-1-AP (TWIST1-specific antibody) at dilution of 1:200 (under 40x lens). Heat mediated antigen retrieval with Tris-EDTA buffer (pH 9.0).



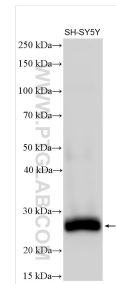
Immunofluorescent analysis of (4% PFA) fixed LO2 cells using TWIST1-specific antibody (25465-1-AP) at dilution of 1:600 and Multi-rAb CoraLite® Plus 488-Goat Anti-Rabbit Recombinant Secondary Antibody (H+L) (RGAR002), CL594-phalloidin (red).



Various lysates were subjected to SDS PAGE followed by western blot with 25465-1-AP (TWIST1-specific antibody) at dilution of 1:2000 incubated at room temperature for 1.5 hours.



IP result of anti-TWIST1-specific (IP:25465-1-AP, 4ug; Detection:25465-1-AP 1:500) with MDA-MB-453s cells lysate 920ug.



SH-SY5Y cells were subjected to SDS PAGE followed by western blot with 25465-1-AP (TWIST1-specific antibody) at dilution of 1:3000 incubated at room temperature for 1.5 hours.