

For Research Use Only

KREMEN1 Polyclonal antibody

Catalog Number: 25434-1-AP



Basic Information

Catalog Number: 25434-1-AP	GenBank Accession Number: BC063787	Purification Method: Antigen affinity purification
Size: 150ul , Concentration: 1000 ug/ml by Nanodrop and 407 ug/ml by Bradford method using BSA as the standard;	GeneID (NCBI): 83999	Recommended Dilutions: WB 1:1000-1:6000
Source: Rabbit	UNIPROT ID: Q96MU8	
Isotype: IgG	Full Name: kringle containing transmembrane protein 1	
Immunogen Catalog Number: AG22092	Calculated MW: 473 aa, 52 kDa	
	Observed MW: 50 kDa	

Applications

Tested Applications: WB, ELISA	Positive Controls: WB : mouse liver tissue, rat liver tissue
Species Specificity: human, mouse, rat	

Background Information

Kringle containing transmembrane protein 1 (KREMEN1, also known as KRM1, ECTD13, and KREMEN) is a transmembrane receptor located in the membrane. During the development of various organs, including the nervous system, limbs, and liver, KREMEN1 synergizes with the Dkk proteins to inhibit Wnt signaling (PMID: 18505822). KREMEN1 has been reported as a tumor suppressor, preventing cancer cell survival in a ligand-poor environment (PMID: 31069116). Variations and mutations of KREMEN1 have been associated with ectodermal dysplasia and Hand-foot-and-mouth disease (PMID: 34028942; 31911601).

Storage

Storage:
Store at -20°C. Stable for one year after shipment.
Storage Buffer:
PBS with 0.02% sodium azide and 50% glycerol pH 7.3.
Aliquoting is unnecessary for -20°C storage

*** 20ul sizes contain 0.1% BSA

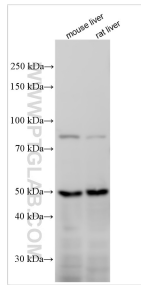
For technical support and original validation data for this product please contact:

T: 1 (888) 4PTGLAB (1-888-478-4522) (toll free in USA), or 1(312) 455-8498 (outside USA)

E: proteintech@ptglab.com
W: ptglab.com

This product is exclusively available under Proteintech Group brand and is not available to purchase from any other manufacturer.

Selected Validation Data



Various lysates were subjected to SDS PAGE followed by western blot with 25434-1-AP (KREM1 antibody) at dilution of 1:3000 incubated at room temperature for 1.5 hours.