

For Research Use Only

GAS2L3 Polyclonal antibody

Catalog Number: 25409-1-AP



Basic Information

Catalog Number:

25409-1-AP

Size:

150ul, Concentration: 600 ug/ml by Nanodrop;

Source:

Rabbit

Isotype:

IgG

Immunogen Catalog Number:

AG22097

GenBank Accession Number:

BC043366

GeneID (NCBI):

283431

UNIPROT ID:

Q86X01

Full Name:

growth arrest-specific 2 like 3

Calculated MW:

694 aa, 75 kDa

Observed MW:

75 kDa

Purification Method:

Antigen affinity purification

Recommended Dilutions:

WB 1:500-1:3000

Applications

Tested Applications:

WB, ELISA

Species Specificity:

human, mouse, rat

Positive Controls:

WB : HEK-293 cells, mouse heart tissue, rat heart tissue

Background Information

GAS2L3 also known as G2L3, belongs to the GAS2 family of four related proteins. It contains an N-terminal calponin homology (CH) domain and a C-terminal GAS2-related (GAR) domain, which are putative actin and microtubule binding domains. GAS2L3 is specifically expressed in mitosis and it localizes to the midbody and the constriction zone during cytokinesis (PMID: 28937871).

Storage

Storage:

Store at -20°C. Stable for one year after shipment.

Storage Buffer:

PBS with 0.02% sodium azide and 50% glycerol pH 7.3.

Aliquoting is unnecessary for -20°C storage

*** 20ul sizes contain 0.1% BSA

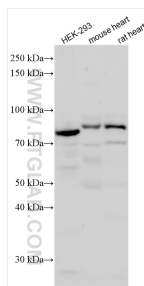
For technical support and original validation data for this product please contact:

T: 1 (888) 4PTGLAB (1-888-478-4522) (toll free in USA), or 1(312) 455-8498 (outside USA)

E: proteintech@ptglab.com
W: ptglab.com

This product is exclusively available under Proteintech Group brand and is not available to purchase from any other manufacturer.

Selected Validation Data



Various lysates were subjected to SDS PAGE followed by western blot with 25409-1-AP (GAS2L3 antibody) at dilution of 1:1500 incubated at room temperature for 1.5 hours.