

For Research Use Only

IGFN1 Polyclonal antibody

Catalog Number: 25095-1-AP



Basic Information

Catalog Number:

25095-1-AP

Size:

150ul , Concentration: 600 ug/ml by Nanodrop;

Source:

Rabbit

Isotype:

IgG

Immunogen Catalog Number:

AG18731

GenBank Accession Number:

BC131529

GeneID (NCBI):

91156

UNIPROT ID:

Q86VF2

Full Name:

immunoglobulin-like and fibronectin type III domain containing 1

Calculated MW:

1251 aa, 138 kDa

Observed MW:

100 kDa

Purification Method:

Antigen affinity purification

Recommended Dilutions:

WB 1:500-1:3000

Applications

Tested Applications:

WB, ELISA

Species Specificity:

human

Positive Controls:

WB : A431 cells, HeLa cells

Background Information

Immunoglobulin-like and fibronectin type III domain-containing protein 1 (IGFN1), also known as EEF1A2-binding protein 1 (EEF1A2BP1) or KY-interacting protein 1 (KYIP1), presents structural similarity to sarcomeric proteins belonging to the intracellular Ig superfamily, including myosin-binding protein C fast and slow-type skeletal muscle isoforms (PMID: 18756455). IGFN1 along with KY and FLNC is the part of a Z-band associated protein complex likely providing structural support to the skeletal muscle (PMID: 20206623). IGFN1 gene has been associated with some cancers (PMID: 28027327; 30335789; 35456975). At least five isoforms of IGFN1 produced by alternative splicing have been identified (PMID: 20206623).

Storage

Storage:

Store at -20°C. Stable for one year after shipment.

Storage Buffer:

PBS with 0.02% sodium azide and 50% glycerol pH 7.3.

Aliquoting is unnecessary for -20°C storage

*** 20ul sizes contain 0.1% BSA

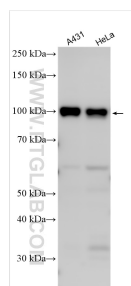
For technical support and original validation data for this product please contact:

T: 1 (888) 4PTGLAB (1-888-478-4522) (toll free in USA), or 1(312) 455-8498 (outside USA)

E: proteintech@ptglab.com
W: ptglab.com

This product is exclusively available under Proteintech Group brand and is not available to purchase from any other manufacturer.

Selected Validation Data



Various lysates were subjected to SDS PAGE followed by western blot with 25095-1-AP (IGFN1 antibody) at dilution of 1:1500 incubated at room temperature for 1.5 hours.