

For Research Use Only

# RELB Polyclonal antibody

Catalog Number: 25027-1-AP **12 Publications**



## Basic Information

**Catalog Number:**

25027-1-AP

**Size:**

150ul, Concentration: 700 ug/ml by Nanodrop;

**Source:**

Rabbit

**Isotype:**

IgG

**Immunogen Catalog Number:**

AG13824

**GenBank Accession Number:**

BC028013

**GeneID (NCBI):**

5971

**UNIPROT ID:**

Q01201

**Full Name:**

v-rel reticuloendotheliosis viral oncogene homolog B

**Calculated MW:**

62 kDa

**Observed MW:**

62-65 kDa

**Purification Method:**

Antigen affinity purification

**Recommended Dilutions:**

WB 1:1000-1:8000

IP 0.5-4.0 ug for 1.0-3.0 mg of total protein lysate

IHC 1:50-1:500

IF/ICC 1:200-1:800

## Applications

**Tested Applications:**

WB, IHC, IF/ICC, IP, ELISA

**Cited Applications:**

WB, IHC, IF

**Species Specificity:**

human, mouse

**Cited Species:**

human, mouse, rat

**Positive Controls:**

**WB:** Daudi cells, Raji cells, Ramos cells

**IP:** Raji cells,

**IHC:** human colon cancer tissue, human lymphoma tissue

**IF/ICC:** HeLa cells,

**Note-IHC: suggested antigen retrieval with TE buffer pH 9.0; (\*) Alternatively, antigen retrieval may be performed with citrate buffer pH 6.0**

## Background Information

RELB, also named as Transcription factor RelB, is a 579 amino acid protein, which contains one RHD domain. RELB localizes in the nucleus and cytoplasm. RELB is a pleiotropic transcription factor which is present in almost all cell types and is involved in many biological processes such as inflammation, immunity, differentiation, cell growth, tumorigenesis and apoptosis.

## Notable Publications

Author	Pubmed ID	Journal	Application
Xinhua Xiao	28906487	Cell Death Dis	WB
Li Chen	32492708	J Clin Endocrinol Metab	WB
Lu Jiang	26192917	Nat Genet	WB, IHC

## Storage

**Storage:**

Store at -20°C. Stable for one year after shipment.

**Storage Buffer:**

PBS with 0.02% sodium azide and 50% glycerol pH 7.3.

Aliquoting is unnecessary for -20°C storage

**\*\*\* 20ul sizes contain 0.1% BSA**

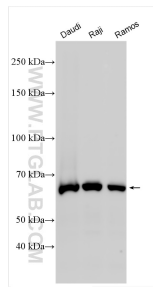
For technical support and original validation data for this product please contact:

T: 1 (888) 4PTGLAB (1-888-478-4522) (toll free in USA), or 1(312) 455-8498 (outside USA)

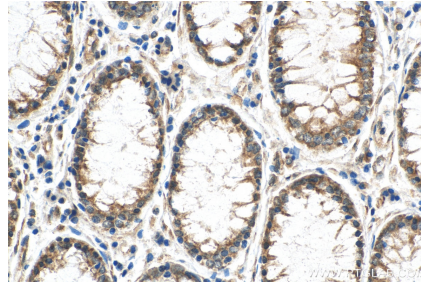
E: proteintech@ptglab.com  
W: ptglab.com

**This product is exclusively available under Proteintech Group brand and is not available to purchase from any other manufacturer.**

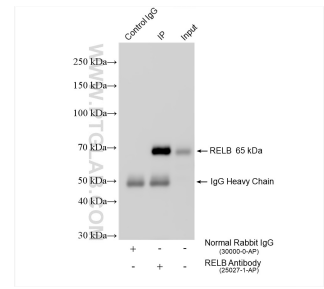
## Selected Validation Data



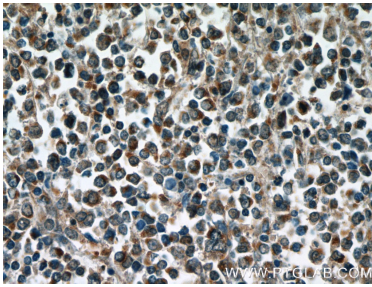
Various lysates were subjected to SDS PAGE followed by western blot with 25027-1-AP (RELB antibody) at dilution of 1:4000 incubated at room temperature for 1.5 hours.



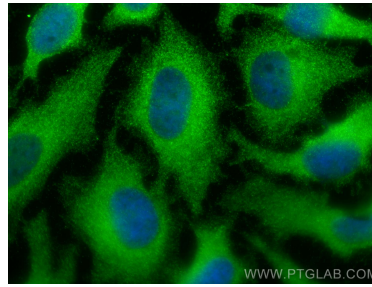
Immunohistochemical analysis of paraffin-embedded human colon cancer tissue slide using 25027-1-AP (RELB antibody) at dilution of 1:200 (under 40x lens). Heat mediated antigen retrieval with Tris-EDTA buffer (pH 9.0).



IP result of anti-RELB (IP:25027-1-AP, 4ug; Detection:25027-1-AP 1:3000) with Raji cells lysate 1600 ug.



Immunohistochemical analysis of paraffin-embedded human lymphoma tissue slide using 25027-1-AP (RELB Antibody) at dilution of 1:50 (under 40x lens).



Immunofluorescent analysis of (-20°C Methanol) fixed HeLa cells using RELB antibody (25027-1-AP) at dilution of 1:400 and CoraLite®488-Conjugated AffiniPure Goat Anti-Rabbit IgG(H+L).