

For Research Use Only

PRLHR Polyclonal antibody

Catalog Number: 24800-1-AP



Basic Information

Catalog Number: 24800-1-AP	GenBank Accession Number: BC101490	Purification Method: Antigen affinity purification
Size: 150ul , Concentration: 800 ug/ml by Nanodrop;	GeneID (NCBI): 2834	Recommended Dilutions: WB 1:1000-1:4000
Source: Rabbit	UNIPROT ID: P49683	
Isotype: IgG	Full Name: prolactin releasing hormone receptor	
Immunogen Catalog Number: AG20098	Calculated MW: 370 aa, 41 kDa	
	Observed MW: 41 kDa	

Applications

Tested Applications: WB, ELISA	Positive Controls: WB : HepG2 cells, Jurkat cells, SH-SY5Y cells, rat brain tissue
Species Specificity: human, rat	

Background Information

PRLHR (prolactin-releasing hormone receptor) is implicated in lactation, regulation of food intake, and pain-signal processing.

Storage

Storage:
Store at -20°C. Stable for one year after shipment.
Storage Buffer:
PBS with 0.02% sodium azide and 50% glycerol pH 7.3.
Aliquoting is unnecessary for -20°C storage

***** 20ul sizes contain 0.1% BSA**

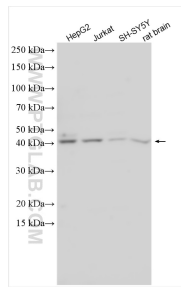
For technical support and original validation data for this product please contact:

T: 1 (888) 4PTGLAB (1-888-478-4522) (toll free in USA), or 1(312) 455-8498 (outside USA)

E: proteintech@ptglab.com
W: ptglab.com

This product is exclusively available under Proteintech Group brand and is not available to purchase from any other manufacturer.

Selected Validation Data



Various lysates were subjected to SDS PAGE followed by western blot with 24800-1-AP (PRLHR antibody) at dilution of 1:2000 incubated at room temperature for 1.5 hours.