

For Research Use Only

TMEM111 Polyclonal antibody

Catalog Number: 24645-1-AP

Featured Product



Basic Information

Catalog Number: 24645-1-AP	GenBank Accession Number: BC022807	Purification Method: Antigen affinity purification
Size: 150ul , Concentration: 600 ug/ml by Nanodrop;	GeneID (NCBI): 55831	Recommended Dilutions: WB 1:500-1:2000 IHC 1:200-1:800 IF/ICC 1:50-1:500
Source: Rabbit	UNIPROT ID: Q9POL2	
Isotype: IgG	Full Name: transmembrane protein 111	
Immunogen Catalog Number: AG18236	Calculated MW: 261 aa, 30 kDa	
	Observed MW: 30 kDa	

Applications

Tested Applications:
WB, IHC, IF/ICC, ELISA

Species Specificity:
human, mouse, rat

Note-IHC: suggested antigen retrieval with TE buffer pH 9.0; (*) Alternatively, antigen retrieval may be performed with citrate buffer pH 6.0

Positive Controls:

WB : A431 cells, HEK-293 cells, HuH-7 cells, MDA-MB-453s cells, NIH/3T3 cells, mouse brain tissue, mouse stomach tissue, mouse testis tissue, rat brain tissue

IHC : human intrahepatic cholangiocarcinoma tissue, human ovary cancer tissue

IF/ICC : A431 cells,

Background Information

TMEM111, also names as EMC3, is part of the endoplasmic reticulum-associated secretory pathway (PMID: 19797678). TMEM111 was required for murine pulmonary surfactant synthesis and lung function at birth (PMID: 29083321). It can be detect a band of 30 kDa.

Storage

Storage:
Store at -20°C. Stable for one year after shipment.
Storage Buffer:
PBS with 0.02% sodium azide and 50% glycerol pH 7.3.
Aliquoting is unnecessary for -20°C storage

*** 20ul sizes contain 0.1% BSA

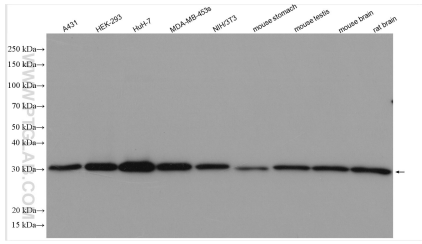
For technical support and original validation data for this product please contact:

T: 1 (888) 4PTGLAB (1-888-478-4522) (toll free in USA), or 1(312) 455-8498 (outside USA)

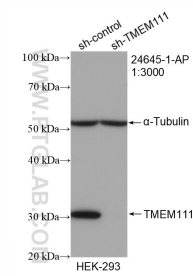
E: proteintech@ptglab.com
W: ptglab.com

This product is exclusively available under Proteintech Group brand and is not available to purchase from any other manufacturer.

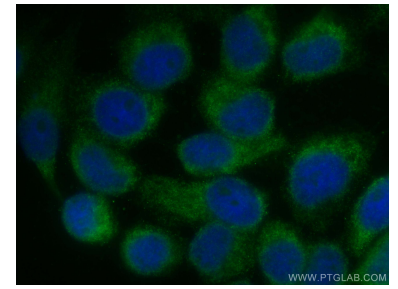
Selected Validation Data



Various lysates were subjected to SDS PAGE followed by western blot with 24645-1-AP (TMEM111 antibody) at dilution of 1:1000 incubated at room temperature for 1.5 hours.



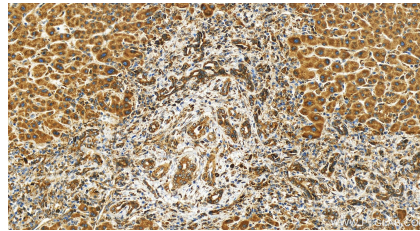
WB result of TMEM111 antibody (24645-1-AP; 1:3000; incubated at room temperature for 1.5 hours) with sh-Control and sh-TMEM111 transfected HEK-293 cells.



Immunofluorescent analysis of (-20°C Methanol) fixed A431 cells using TMEM111 antibody (24645-1-AP) at dilution of 1:200 and CoraLite@488-Conjugated AffiniPure Goat Anti-Rabbit IgG(H+L).



Immunohistochemical analysis of paraffin-embedded human ovary cancer tissue slide using 24645-1-AP (TMEM111 antibody) at dilution of 1:200 (under 20x lens). Heat mediated antigen retrieval with Tris-EDTA buffer (pH 9.0).



Immunohistochemical analysis of paraffin-embedded human intrahepatic cholangiocarcinoma tissue slide using 24645-1-AP (TMEM111 antibody) at dilution of 1:400 (under 20x lens). Heat mediated antigen retrieval with Tris-EDTA buffer (pH 9.0).