

For Research Use Only

RS1 Polyclonal antibody, PBS Only

Catalog Number: 24430-1-PBS



Basic Information

Catalog Number:

24430-1-PBS

Size:

100ug, Concentration: 1 mg/ml by Nanodrop;

Source:

Rabbit

Isotype:

IgG

Immunogen Catalog Number:

AG18885

GenBank Accession Number:

BC141638

GeneID (NCBI):

6247

UNIPROT ID:

O15537

Full Name:

retinoschisin 1

Calculated MW:

26 kDa

Observed MW:

26 kDa

Purification Method:

Antigen affinity purification

Applications

Tested Applications:

WB, IHC, IF-P, IF-Fro, Indirect ELISA

Species Specificity:

human, mouse, rat

Background Information

RS1 is also named as XLR51. RS1 can bind negatively charged membrane lipids, such as phosphatidylserine and phosphoinositides. RS1 is required for normal structure and function of the retina (PMID:19093009). It may play a role in cell-cell adhesion processes in the retina (PMID:27114531). RS1 is high expression in the retina (at protein level) (PMID:10915776, PMID:9326935). It is detected in the inner segment of the photoreceptors, the inner nuclear layer, the inner plexiform layer and the ganglion cell layer. At the macula, it is expressed in both the outer and inner nuclear layers and in the inner plexiform layer (PMID:10915776, PMID:10915776). And RS1 is undetectable in the inner plexiform layers and the inner nuclear layer (PMID:10915776)

Storage

Storage:

Store at -80°C.

Storage Buffer:

PBS only, pH7.3

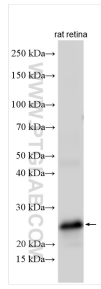
For technical support and original validation data for this product please contact:

T: 1 (888) 4PTGLAB (1-888-478-4522) (toll free in USA), or 1(312) 455-8498 (outside USA)

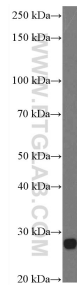
E: proteintech@ptglab.com
W: ptglab.com

This product is exclusively available under Proteintech Group brand and is not available to purchase from any other manufacturer.

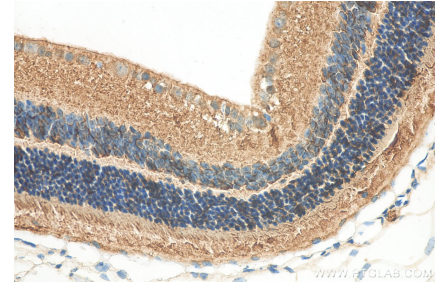
Selected Validation Data



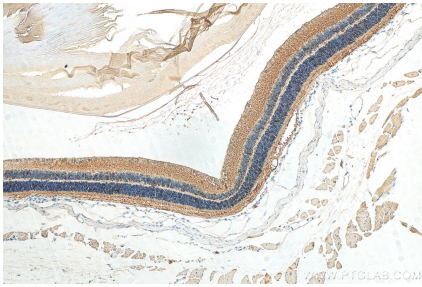
rat retina tissue were subjected to SDS PAGE followed by western blot with 24430-1-AP (RS1 antibody) at dilution of 1:5000 incubated at room temperature for 1.5 hours. This data was developed using the same antibody clone with 24430-1-PBS in a different storage buffer formulation.



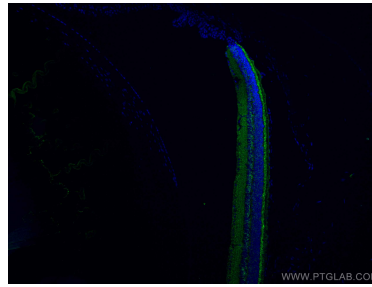
mouse eye tissue were subjected to SDS PAGE followed by western blot with 24430-1-AP (RS1 Antibody) at dilution of 1:600 incubated at room temperature for 1.5 hours. This data was developed using the same antibody clone with 24430-1-PBS in a different storage buffer formulation.



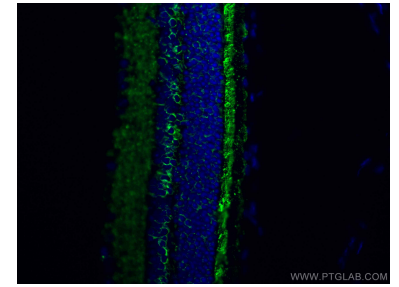
Immunohistochemical analysis of paraffin-embedded mouse eye tissue slide using 24430-1-AP (RS1 antibody) at dilution of 1:200 (under 40x lens). Heat mediated antigen retrieval with Tris-EDTA buffer (pH 9.0). This data was developed using the same antibody clone with 24430-1-PBS in a different storage buffer formulation.



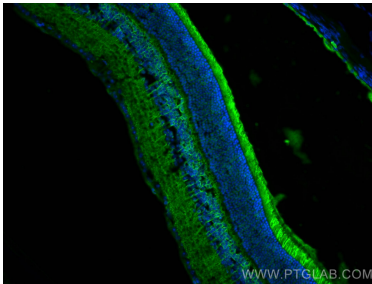
Immunohistochemical analysis of paraffin-embedded mouse eye tissue slide using 24430-1-AP (RS1 antibody) at dilution of 1:200 (under 10x lens). Heat mediated antigen retrieval with Tris-EDTA buffer (pH 9.0). This data was developed using the same antibody clone with 24430-1-PBS in a different storage buffer formulation.



Immunofluorescent analysis of (4% PFA) fixed mouse eye tissue using RS1 antibody (24430-1-AP) at dilution of 1:200 and CoralLite®488-Conjugated AffiniPure Goat Anti-Rabbit IgG(H+L). This data was developed using the same antibody clone with 24430-1-PBS in a different storage buffer formulation.



Immunofluorescent analysis of (4% PFA) fixed mouse eye tissue using RS1 antibody (24430-1-AP) at dilution of 1:200 and CoralLite®488-Conjugated AffiniPure Goat Anti-Rabbit IgG(H+L). This data was developed using the same antibody clone with 24430-1-PBS in a different storage buffer formulation.



Immunofluorescent analysis of (4% PFA) fixed frozen OCT-embedded mouse eye tissue using 24430-1-AP (RS1 antibody) at dilution of 1:200 and CoralLite®488-Conjugated AffiniPure Goat Anti-Rabbit IgG(H+L). This data was developed using the same antibody clone with 24430-1-PBS in a different storage buffer formulation.