

For Research Use Only

ATG16L2 Polyclonal antibody

Catalog Number: 24322-1-AP **1 Publications**



Basic Information

Catalog Number:

24322-1-AP

Size:

150ul, Concentration: 550 ug/ml by Nanodrop and 333 ug/ml by Bradford method using BSA as the standard;

Source:

Rabbit

Isotype:

IgG

Immunogen Catalog Number:

AG19399

GenBank Accession Number:

BC137490

GeneID (NCBI):

89849

UNIPROT ID:

Q8NAA4

Full Name:

ATG16 autophagy related 16-like 2 (S. cerevisiae)

Calculated MW:

619 aa, 69 kDa

Observed MW:

70 kDa, 30 kDa

Purification Method:

Antigen affinity purification

Recommended Dilutions:

WB 1:500-1:2000

IP 0.5-4.0 ug for 1.0-3.0 mg of total protein lysate

IF/ICC 1:50-1:500

Applications

Tested Applications:

WB, IF/ICC, IP, ELISA

Cited Applications:

WB

Species Specificity:

human, mouse

Cited Species:

mouse

Positive Controls:

WB : mouse spleen tissue, mouse testis tissue

IP : mouse testis tissue,

IF/ICC : MCF-7 cells,

Background Information

ATG16L2 also named as Autophagy related protein 16-2 is a 619 amino-acid protein, Which belongs to the WD repeat ATG16 family. ATG16L2 contains 7 WD repeats and localizes in the cytoplasm. There are three isoforms of ATG16L2 and the molecular weight of three isoform is respectively 69kDa, 56kDa and 31kDa. ATG16L2 may play a role in autophagy.

Notable Publications

Author	Pubmed ID	Journal	Application
Trieu-Duc Vu	35504437	Gene	WB

Storage

Storage:

Store at -20°C. Stable for one year after shipment.

Storage Buffer:

PBS with 0.02% sodium azide and 50% glycerol pH 7.3.

Aliquoting is unnecessary for -20°C storage

*** 20ul sizes contain 0.1% BSA

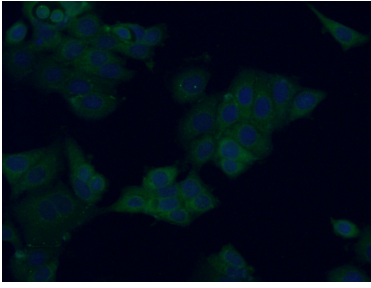
For technical support and original validation data for this product please contact:

T: 1 (888) 4PTGLAB (1-888-478-4522) (toll free in USA), or 1(312) 455-8498 (outside USA)

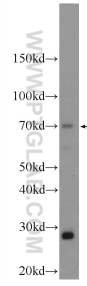
E: proteintech@ptglab.com
W: ptglab.com

This product is exclusively available under Proteintech Group brand and is not available to purchase from any other manufacturer.

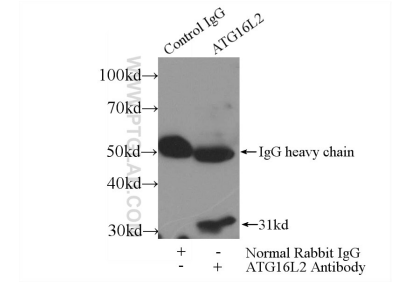
Selected Validation Data



Immunofluorescent analysis of (-20°C Ethanol) fixed MCF-7 cells using 24322-1-AP (ATG16L2 antibody) at dilution of 1:50 and Alexa Fluor 488-Conjugated Goat Anti-Rabbit IgG(H+L).



mouse spleen tissue were subjected to SDS PAGE followed by western blot with 24322-1-AP (ATG16L2 Antibody) at dilution of 1:1000 incubated at room temperature for 1.5 hours.



IP result of anti-ATG16L2 (IP:24322-1-AP, 3ug; Detection:24322-1-AP 1:700) with mouse testis tissue lysate 4800ug.