

TAF15 Polyclonal antibody

Catalog Number: 24235-1-AP

1 Publications

Basic Information

Catalog Number: 24235-1-AP	GenBank Accession Number: BC046099	Purification Method: Antigen Affinity purified
Size: 150ul , Concentration: 800 µg/ml by Nanodrop;	GeneID (NCBI): 8148	Recommended Dilutions: WB 1:500-1:2000 IHC 1:20-1:200 IF 1:20-1:200
Source: Rabbit	Full Name: TAF15 RNA polymerase II, TATA box binding protein (TBP)-associated factor, 68kDa	
Isotype: IgG	Calculated MW: 592 aa, 62 kDa	
Immunogen Catalog Number: AG20828	Observed MW: 68 kDa	

Applications

Tested Applications: IF, IHC, WB, ELISA	Positive Controls:
Cited Applications: RIP, WB	WB : HEK-293 cells,
Species Specificity: human	IHC : human testis tissue, human kidney tissue
Cited Species: human	IF : HEK-293 cells,

Note-IHC: suggested antigen retrieval with TE buffer pH 9.0; (*) Alternatively, antigen retrieval may be performed with citrate buffer pH 6.0

Background Information

TAF15 (TAF2N or TAFII68) is a nuclear protein known to associate with a distinct subpopulation of transcription factor IID (TFIID), a multi-subunit complex that nucleates the pre-initiation complex on promoters of protein-coding genes. TAF15 harbors a transcriptional activation domain, a RNA recognition motif and many Arg-Gly-Gly repeats that participate in RNA binding. TAF15 along with FUS and EWS constitutes the FET (FUS/EWS/TAF15) protein family of heterogeneous nuclear ribonucleoproteins (hnRNPs) class of RNA binding proteins that are multifunctional proteins implicated in numerous aspects of RNA processing/functions. TAF15 is a nuclear protein that shuttle between cytoplasm-nucleus and as RNA/ssDNA-binding protein, it play specific roles during transcription initiation at distinct promoters and enter the preinitiation complex together with the RNA polymerase II. TAF15 as well as other FET member genes are frequently translocated in sarcomas and rare hematopoietic as well as epithelial cancers. Moreover, dominant mutations in genes coding for four hnRNPs (TDP-43, FUS/TLS, TAF15, and EWS) are found in familial and sporadic cases of ALS and a chromosomal aberration involving TAF15/TAF2N is found in a form of extraskeletal myxoid chondrosarcomas (EMC).

Notable Publications

Author	Pubmed ID	Journal	Application
Dalu Wang	34868956	Front Oncol	WB, RIP

Storage

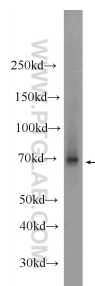
Storage:
Store at -20°C. Stable for one year after shipment.
Storage Buffer:
PBS with 0.02% sodium azide and 50% glycerol pH 7.3.
 Aliquoting is unnecessary for -20°C storage

*** 20ul sizes contain 0.1% BSA

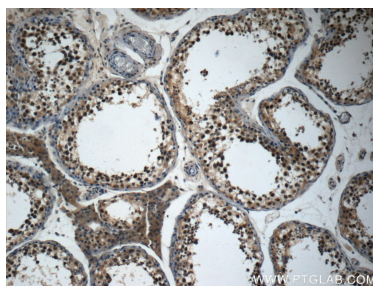
For technical support and original validation data for this product please contact:
 T: 1 (888) 4PTGLAB (1-888-478-4522) (toll free in USA), or 1(312) 455-8498 (outside USA)
 E: proteintech@ptglab.com
 W: ptglab.com

This product is exclusively available under Proteintech Group brand and is not available to purchase from any other manufacturer.

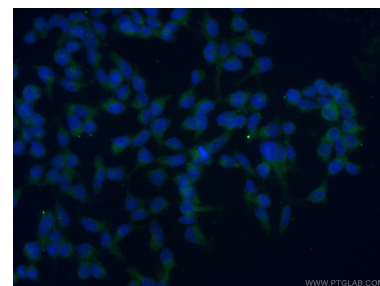
Selected Validation Data



HEK-293 cells were subjected to SDS PAGE followed by western blot with 24235-1-AP (TAF15 Antibody) at dilution of 1:1000 incubated at room temperature for 1.5 hours.



Immunohistochemical analysis of paraffin-embedded human testis slide using 24235-1-AP (TAF15 Antibody) at dilution of 1:50.



Immunofluorescent analysis of (-20°C Ethanol) fixed HEK-293 cells using 24235-1-AP (TAF15 antibody) at dilution of 1:50 and Alexa Fluor 488-conjugated AffiniPure Goat Anti-Rabbit IgG(H+L).