

For Research Use Only

CEP89, CCDC123 Polyclonal antibody



Catalog Number: 24002-1-AP

3 Publications

Basic Information

| | | |
|--|--|---|
| Catalog Number: 24002-1-AP | GenBank Accession Number: BC136328 | Purification Method: Antigen affinity purification |
| Size: 150ul , Concentration: 220 µg/ml by Nanodrop and 220 µg/ml by Bradford method using BSA as the standard; | GeneID (NCBI): 84902 | Recommended Dilutions: WB 1:200-1:1000 IF 1:50-1:500 |
| Source: Rabbit | Full Name: coiled-coil domain containing 123 | |
| Isotype: IgG | Calculated MW: 783 aa, 90 kDa | |
| Immunogen Catalog Number: AG21206 | Observed MW: 85-100 kDa, 40 kDa | |

Applications

| | |
|--|--|
| Tested Applications: IF, WB, ELISA | Positive Controls: WB : SH-SY5Y cells, Neuro-2a cells IF : U-251 cells, |
| Cited Applications: IF, WB | |
| Species Specificity: human, mouse | |
| Cited Species: human, mouse | |

Background Information

CCDC123(as known as CEP123), also named as CEP89, is a new player in the process of primary ciliogenesis and it also plays a role in mitochondrial metabolism where it may modulate complex IV activity. It has been shown that CEP123 is localized to the distal appendages of the mother centriole and the localization of CEP123 is cell cycle-dependent with its levels decreasing during mitosis. CEP123 depletion can cause defects in ciliary vesicle formation and prevent the formation of a ciliary vesicle at the distal end of the mother centriole. It is possible that CEP123 is involved in regulating the recruitment of membranes to the centrosome through its interaction with Cep290(PMID:23575228, 23789104, 23348840). 24002-1-AP antibody recognizes all of CEP123 isoforms.

Notable Publications

| Author | Pubmed ID | Journal | Application |
|--------------------|-----------|-----------|-------------|
| Pierrick Le Borgne | 36070319 | PLoS Biol | IF |
| Min Liu | 34480124 | Cell Res | WB,IF |
| Tomoharu Kanie | 28625565 | Dev Cell | IF |

Storage

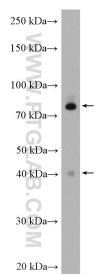
Storage:
Store at -20°C. Stable for one year after shipment.
Storage Buffer:
PBS with 0.02% sodium azide and 50% glycerol pH 7.3.
Aliquoting is unnecessary for -20°C storage

*** 20ul sizes contain 0.1% BSA

For technical support and original validation data for this product please contact:
T: 1 (888) 4PTGLAB (1-888-478-4522) (toll free in USA), or 1(312) 455-8498 (outside USA)
E: proteintech@ptglab.com
W: ptglab.com

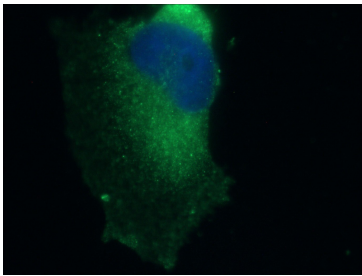
This product is exclusively available under Proteintech Group brand and is not available to purchase from any other manufacturer.

Selected Validation Data



SH-SY5Y cells were subjected to SDS PAGE followed by western blot with 24002-1-AP (CEP89 antibody) at dilution of 1:300 incubated at room temperature for 1.5 hours.

Neuro-2a cells were subjected to SDS PAGE followed by western blot with 24002-1-AP (CEP89 antibody) at dilution of 1:300 incubated at room temperature for 1.5 hours.



Immunofluorescent analysis of (-20°C Ethanol) fixed U-251 cells using 24002-1-AP (CEP89 antibody) at dilution of 1:50 and Alexa Fluor 488-Conjugated AffiniPure Goat Anti-Rabbit IgG(H+L).