

For Research Use Only

SCF Polyclonal antibody

Catalog Number: 23844-1-AP



Basic Information

Catalog Number: 23844-1-AP	GenBank Accession Number: BC074725	Purification Method: Antigen Affinity purified
Size: 150ul , Concentration: 550 ug/ml by Nanodrop and 240 ug/ml by Bradford method using BSA as the standard;	GeneID (NCBI): 4254	Recommended Dilutions: WB 1:500-1:1000 IF/ICC 1:200-1:800
Source: Rabbit	UNIPROT ID: P21583	
Isotype: IgG	Full Name: KIT ligand	
Immunogen Catalog Number: AG20837	Calculated MW: 273 aa, 31 kDa	
	Observed MW: 31 kDa	

Applications

Tested Applications: WB, IF/ICC, ELISA	Positive Controls: WB : K-562 cells, IF/ICC : HepG2 cells, HEK-293 cells
Species Specificity: human	

Background Information

Stem cell factor (SCF) is also named as mast cell growth factor (MGF), Kit ligand (Kitl), c-Kit ligand, steel factor and Kitlg. SCF is a pleiotropic cytokine (also as a dimeric molecule) that mediates regulatory effects on inflammation, tissue remodeling, and fibrosis through binding to and activating its receptor tyrosine kinase c-Kit (PMID: 1698553, PMID: 8630386, PMID: 23073628). SCF is the ligand of c-Kit, a member of the RTKs family. Molecular activity of RTKs is a primary stimulus of cell motility, and expression of the SCF/c-Kit axis is associated with cell migration (PMID: 28629522). SCF is a cytokine that synergizes the effects of Epo during erythropoiesis. Stem cell factor plays a well-described role in regulating the survival, proliferation, migration, and differentiation of hematopoietic progenitors, melanocytes, and germ cells (PMID: 36688460). More recent studies have demonstrated SCF expression in dermal and intestinal epithelial cells, and increased SCF expression has been reported in the inflamed mucosa of individuals with IBD and colonitis (PMID: 18200049, PMID: 30157426).

Storage

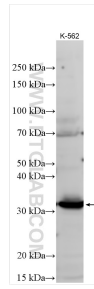
Storage:
Store at -20°C. Stable for one year after shipment.
Storage Buffer:
PBS with 0.02% sodium azide and 50% glycerol pH 7.3.
Aliquoting is unnecessary for -20°C storage

*** 20ul sizes contain 0.1% BSA

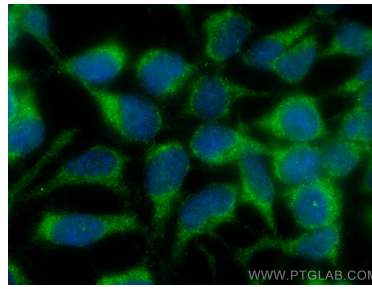
For technical support and original validation data for this product please contact:
T: 1 (888) 4PTGLAB (1-888-478-4522) (toll free in USA), or 1(312) 455-8498 (outside USA)
E: proteintech@ptglab.com
W: ptglab.com

This product is exclusively available under Proteintech Group brand and is not available to purchase from any other manufacturer.

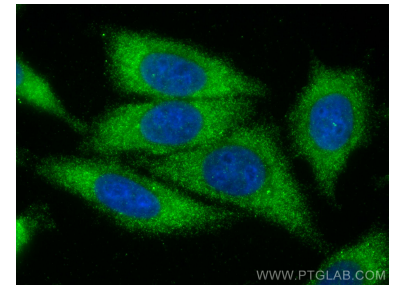
Selected Validation Data



Various lysates were subjected to SDS PAGE followed by western blot with 23844-1-AP (SCF antibody) at dilution of 1:600 incubated at room temperature for 1.5 hours.



Immunofluorescent analysis of (-20°C Ethanol) fixed HEK-293 cells using SCF antibody (23844-1-AP) at dilution of 1:400 and CoraLite®488-Conjugated AffiniPure Goat Anti-Rabbit IgG(H+L).



Immunofluorescent analysis of (-20°C Ethanol) fixed HepG2 cells using SCF antibody (23844-1-AP) at dilution of 1:400 and CoraLite®488-Conjugated AffiniPure Goat Anti-Rabbit IgG(H+L).