

For Research Use Only

NAT8L Polyclonal antibody

Catalog Number: 23841-1-AP

1 Publications



Basic Information

Catalog Number: 23841-1-AP	GenBank Accession Number: BC103748	Purification Method: Antigen Affinity purified
Size: 150ul , Concentration: 600 ug/ml by Nanodrop;	GeneID (NCBI): 339983	Recommended Dilutions: WB 1:500-1:2000 IF/ICC 1:200-1:800
Source: Rabbit	UNIPROT ID: Q8N9F0	
Isotype: IgG	Full Name: N-acetyltransferase 8-like (GCN5-related, putative)	
Immunogen Catalog Number: AG20832	Calculated MW: 134 aa, 15 kDa	
	Observed MW: 48 kDa	

Applications

Tested Applications: WB, IF/ICC, ELISA	Positive Controls: WB : HUVEC cells, mouse brain tissue, rat brain tissue
Cited Applications: WB	IF/ICC : HEK-293 cells,
Species Specificity: human, mouse, rat	
Cited Species: rat	

Background Information

NAT8L (N-acetyltransferase 8-like) catalyzes the formation of N-acetyl aspartate (NAA) from acetyl-CoA and aspartate. In the brain, NAA delivers the acetate moiety to synthesize acetyl-CoA, which is further used for fatty acid generation (PMID: 2415240). NAT8L modulation may impinge on the metabolic reprogramming of cancer cells (PMID: 36580805). The calculated MW of NAT8L is around 33 kDa, and the observed MW is around 45 kDa.

Notable Publications

Author	Pubmed ID	Journal	Application
Junyi Zhang	39052058	Naunyn Schmiedebergs Arch Pharmacol	WB

Storage

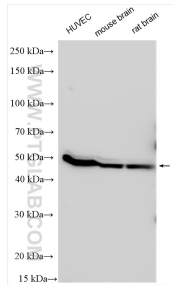
Storage:
Store at -20°C. Stable for one year after shipment.
Storage Buffer:
PBS with 0.02% sodium azide and 50% glycerol pH 7.3.
Aliquoting is unnecessary for -20°C storage

*** 20ul sizes contain 0.1% BSA

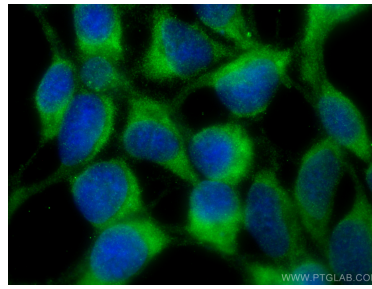
For technical support and original validation data for this product please contact:
T: 1 (888) 4PTGLAB (1-888-478-4522) (toll free in USA), or 1(312) 455-8498 (outside USA)
E: proteintech@ptglab.com
W: ptglab.com

This product is exclusively available under Proteintech Group brand and is not available to purchase from any other manufacturer.

Selected Validation Data



Various lysates were subjected to SDS PAGE followed by western blot with 23841-1-AP (NAT8L antibody) at dilution of 1:1000 incubated at room temperature for 1.5 hours.



Immunofluorescent analysis of (-20°C Ethanol) fixed HEK-293 cells using NAT8L antibody (23841-1-AP) at dilution of 1:400 and CoraLite® 488-Conjugated AffiniPure Goat Anti-Rabbit IgG(H+L) (SA00013-2).