

For Research Use Only

# Cathepsin G Polyclonal antibody

Catalog Number: 23840-1-AP **3 Publications**



## Basic Information

<b>Catalog Number:</b> 23840-1-AP	<b>GenBank Accession Number:</b> BC014460	<b>Purification Method:</b> Antigen affinity purification
<b>Size:</b> 150ul , Concentration: 750 ug/ml by Nanodrop and 440 ug/ml by Bradford method using BSA as the standard;	<b>GeneID (NCBI):</b> 1511	<b>Recommended Dilutions:</b> WB 1:500-1:1000
<b>Source:</b> Rabbit	<b>UNIPROT ID:</b> P08311	
<b>Isotype:</b> IgG	<b>Full Name:</b> cathepsin G	
<b>Immunogen Catalog Number:</b> AG20818	<b>Calculated MW:</b> 29 kDa	
	<b>Observed MW:</b> 29 kDa, 35 kDa	

## Applications

<b>Tested Applications:</b> WB, ELISA	<b>Positive Controls:</b> WB : MCF-7 cells, MDA-MB-453s cells
<b>Cited Applications:</b> WB	
<b>Species Specificity:</b> human	
<b>Cited Species:</b> human	

## Background Information

CTSG(Cathepsin G) is also named as CTLA, CG, MGC23078, Catg and belongs to the peptidase S1 family. It may participate in the killing and digestion of engulfed pathogens, and in connective tissue remodeling at sites of inflammation. CTSG may also play a role in the progression to heart failure by activating angiotensin II, leading to detrimental effects on the heart. The full length protein contains 255 amino acid and has a signal peptide, a propeptide and a glycosylation site.

## Notable Publications

Author	Pubmed ID	Journal	Application
Yun Chen	35935989	Front Immunol	WB
Yansen Xiao	33450198	Cancer Cell	WB
Caroline Schoenherr	31826021	PLoS One	

## Storage

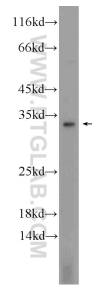
**Storage:**  
Store at -20°C. Stable for one year after shipment.  
**Storage Buffer:**  
PBS with 0.02% sodium azide and 50% glycerol pH 7.3.  
Aliquoting is unnecessary for -20°C storage

**\*\*\* 20ul sizes contain 0.1% BSA**

For technical support and original validation data for this product please contact:  
T: 1 (888) 4PTGLAB (1-888-478-4522) (toll free in USA), or 1(312) 455-8498 (outside USA) E: proteintech@ptglab.com W: ptglab.com

**This product is exclusively available under Proteintech Group brand and is not available to purchase from any other manufacturer.**

## Selected Validation Data



MCF-7 cells were subjected to SDS PAGE followed by western blot with 23840-1-AP (Cathepsin G antibody at dilution of 1:600 incubated at room temperature for 1.5 hours.