

For Research Use Only

CLIP1 Polyclonal antibody, PBS Only

Catalog Number: 23839-1-PBS



Basic Information

Catalog Number:

23839-1-PBS

Size:

100ug, Concentration: 1 mg/ml by Nanodrop;

Source:

Rabbit

Isotype:

IgG

Immunogen Catalog Number:

AG20811

GenBank Accession Number:

BC126305

GeneID (NCBI):

6249

UNIPROT ID:

P30622

Full Name:

CAP-GLY domain containing linker protein 1

Calculated MW:

1438 aa, 162 kDa

Observed MW:

160-170 kDa, 135 kDa

Purification Method:

Antigen Affinity purified

Applications

Tested Applications:

WB, IF/ICC, IP, Indirect ELISA

Species Specificity:

human, mouse, rat

Storage

Storage:

Store at -80°C.

Storage Buffer:

PBS Only

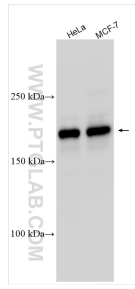
For technical support and original validation data for this product please contact:

T: 1 (888) 4PTGLAB (1-888-478-4522) (toll free in USA), or 1(312) 455-8498 (outside USA)

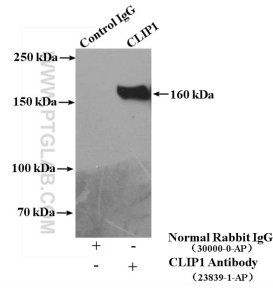
E: proteintech@ptglab.com
W: ptglab.com

This product is exclusively available under Proteintech Group brand and is not available to purchase from any other manufacturer.

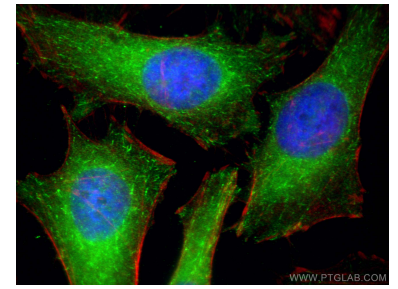
Selected Validation Data



Various lysates were subjected to SDS PAGE followed by western blot with 23839-1-AP (CLIP1 antibody) at dilution of 1:3000 incubated at room temperature for 1.5 hours. This data was developed using the same antibody clone with 23839-1-PBS in a different storage buffer formulation.



IP result of anti-CLIP1 (IP:23839-1-AP, 4ug; Detection:23839-1-AP 1:2000) with HeLa cells lysate 2400ug. This data was developed using the same antibody clone with 23839-1-PBS in a different storage buffer formulation.



Immunofluorescent analysis of (-20°C Ethanol) fixed HeLa cells using CLIP1 antibody (23839-1-AP) at dilution of 1:200 and Multi-rAb CoraLite® Plus 488-Goat Anti-Rabbit Recombinant Secondary Antibody (H+L) (RGAR002), CL594-phalloidin (red). This data was developed using the same antibody clone with 23839-1-PBS in a different storage buffer formulation.