

For Research Use Only

# TPC1 Polyclonal antibody, PBS Only

Catalog Number: 23758-1-PBS

Featured Product



## Basic Information

**Catalog Number:**

23758-1-PBS

**Size:**

100ug, Concentration: 1 mg/ml by Nanodrop;

**Source:**

Rabbit

**Isotype:**

IgG

**Immunogen Catalog Number:**

AG20607

**GenBank Accession Number:**

BC136795

**GeneID (NCBI):**

53373

**UNIPROT ID:**

Q9ULQ1

**Full Name:**

two pore segment channel 1

**Calculated MW:**

816 aa, 94 kDa

**Observed MW:**

94 kDa

**Purification Method:**

Antigen Affinity purified

## Applications

**Tested Applications:**

WB, IHC, IF/ICC, Indirect ELISA

**Species Specificity:**

human, mouse, rat

## Background Information

Two-pore channels (TPCs) are ancient members of the voltage-gated ion channel superfamily, are thought to be non-selective cation channels permeable to Ca<sup>2+</sup>. They mediate their physiological effects through releasing Ca<sup>2+</sup> from acidic organelles in response to cues such as the second messenger, NAADP (nicotinic acid adenine dinucleotide phosphate). Genetic knockout and pharmacological inhibition experiments demonstrate that the two-pore channels, TPC1 and TPC2, are required for infection by Filoviruses Ebola and Marburg in mice. (PMID: 29746898; PMID 25722412) Two pore segment channel 1 (TPC1) is a human protein encoded by the TPCN1 gene.

## Storage

**Storage:**

Store at -80°C.

**Storage Buffer:**

PBS Only

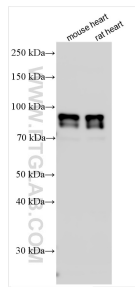
For technical support and original validation data for this product please contact:

T: 1 (888) 4PTGLAB (1-888-478-4522) (toll free in USA), or 1(312) 455-8498 (outside USA)

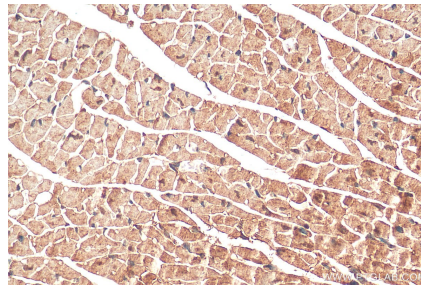
E: [proteintech@ptglab.com](mailto:proteintech@ptglab.com)  
W: [ptglab.com](http://ptglab.com)

This product is exclusively available under Proteintech Group brand and is not available to purchase from any other manufacturer.

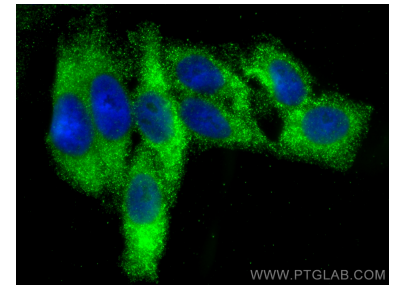
## Selected Validation Data



Various lysates were subjected to SDS PAGE followed by western blot with 23758-1-AP (TPC1 antibody) at dilution of 1:3000 incubated at room temperature for 1.5 hours. This data was developed using the same antibody clone with 23758-1-PBS in a different storage buffer formulation.



Immunohistochemical analysis of paraffin-embedded mouse heart tissue slide using 23758-1-AP (TPCN1 antibody) at dilution of 1:200 (under 40x lens). Heat mediated antigen retrieval with Tris-EDTA buffer (pH 9.0). This data was developed using the same antibody clone with 23758-1-PBS in a different storage buffer formulation.



Immunofluorescent analysis of (-20°C Ethanol) fixed HepG2 cells using TPC1 antibody (23758-1-AP) at dilution of 1:200 and Multi-rAb CoraLite® Plus 488-Goat Anti-Rabbit Recombinant Secondary Antibody (H+L) (RGAR002). This data was developed using the same antibody clone with 23758-1-PBS in a different storage buffer formulation.