

For Research Use Only

# ASCL1 Polyclonal antibody, PBS Only

Catalog Number: 23751-1-PBS



## Basic Information

Catalog Number:

23751-1-PBS

Size:

100ug, Concentration: 1 mg/ml by Nanodrop;

Source:

Rabbit

Isotype:

IgG

Immunogen Catalog Number:

AG19360

GenBank Accession Number:

BC003134

GeneID (NCBI):

429

UNIPROT ID:

P50553

Full Name:

achaete-scute complex homolog 1 (Drosophila)

Calculated MW:

25 kDa

Observed MW:

25 kDa

Purification Method:

Antigen Affinity purified

## Applications

Tested Applications:

WB, IHC, Indirect ELISA

Species Specificity:

human

## Background Information

This gene encodes a member of the basic helix-loop-helix (BHLH) family of transcription factors. The protein activates transcription by binding to the E box (5'-CANNTG-3'). Dimerization with other BHLH proteins is required for efficient DNA binding. This protein plays a role in neuronal commitment and differentiation and in the generation of olfactory and autonomic neurons. Mutations in this gene may contribute to the congenital central hypoventilation syndrome (CCHS) phenotype in rare cases.

## Storage

Storage:

Store at -80°C.

Storage Buffer:

PBS Only

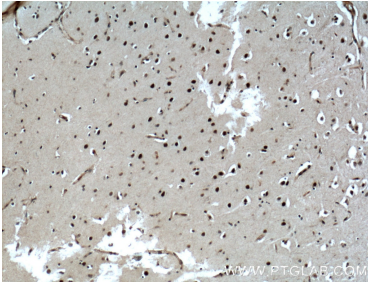
For technical support and original validation data for this product please contact:

T: 1 (888) 4PTGLAB (1-888-478-4522) (toll free in USA), or 1(312) 455-8498 (outside USA)

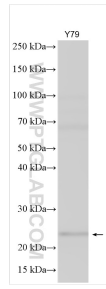
E: [proteintech@ptglab.com](mailto:proteintech@ptglab.com)  
W: [ptglab.com](http://ptglab.com)

This product is exclusively available under Proteintech Group brand and is not available to purchase from any other manufacturer.

## Selected Validation Data



Immunohistochemical analysis of paraffin-embedded human brain tissue slide using 23751-1-AP (ASCL1 Antibody) at dilution of 1:200 (under 10x lens). Heat mediated antigen retrieval with Tris-EDTA buffer (pH 9.0). This data was developed using the same antibody clone with 23751-1-PBS in a different storage buffer formulation.



Various lysates were subjected to SDS PAGE followed by western blot with 23751-1-AP (ASCL1 antibody) at dilution of 1:500 incubated at room temperature for 1.5 hours. This data was developed using the same antibody clone with 23751-1-PBS in a different storage buffer formulation.