

For Research Use Only

# LGALS3BP Polyclonal antibody, PBS Only

Catalog Number: 23307-1-PBS



## Basic Information

**Catalog Number:**

23307-1-PBS

**Size:**

100ug, Concentration: 1 mg/ml by Nanodrop;

**Source:**

Rabbit

**Isotype:**

IgG

**Immunogen Catalog Number:**

AG19700

**GenBank Accession Number:**

BC002403

**GeneID (NCBI):**

3959

**UNIPROT ID:**

Q08380

**Full Name:**

lectin, galactoside-binding, soluble, 3 binding protein

**Calculated MW:**

585 aa, 65 kDa

**Observed MW:**

65-70 kDa

**Purification Method:**

Antigen affinity purification

## Applications

**Tested Applications:**

WB, IHC, IF/ICC, Indirect ELISA

**Species Specificity:**

human, mouse

## Background Information

The galectins are a family of beta-galactoside-binding proteins implicated in modulating cell-cell and cell-matrix interactions. Galectin-3-binding protein (LGALS3BP, also known as 90K or Mac-2 BP) is a secreted glycoprotein which binds galectin-3, galectin-1, beta 1 integrins, collagens and fibronectin (PMID: 8034587; 8024581; 11146440; 9501082). It has been implicated in tumor metastatic processes, as well as in other cell adhesion and immune functions. Levels of LGALS3BP have been found elevated in the serum of patients with cancer and in those infected by the human immunodeficiency virus (HIV) (PMID: 7698018). Western analysis suggests that LGALS3BP is found in breast milk, semen, saliva, urine, and tears, in addition to serum (PMID: 8390986).

## Storage

**Storage:**

Store at -80°C.

**Storage Buffer:**

PBS Only

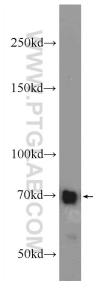
For technical support and original validation data for this product please contact:

T: 1 (888) 4PTGLAB (1-888-478-4522) (toll free in USA), or 1(312) 455-8498 (outside USA)

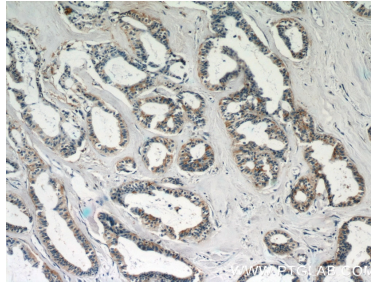
E: [proteintech@ptglab.com](mailto:proteintech@ptglab.com)  
W: [ptglab.com](http://ptglab.com)

**This product is exclusively available under Proteintech Group brand and is not available to purchase from any other manufacturer.**

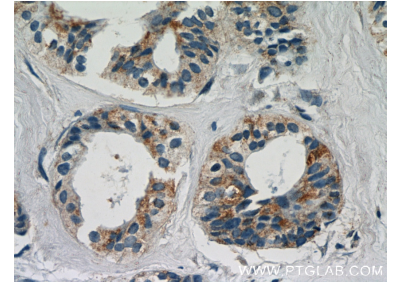
## Selected Validation Data



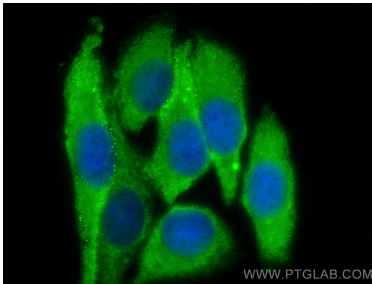
HepG2 cells were subjected to SDS PAGE followed by western blot with 23307-1-AP (LGALS3BP antibody) at dilution of 1:1000 incubated at room temperature for 1.5 hours. This data was developed using the same antibody clone with 23307-1-PBS in a different storage buffer formulation.



Immunohistochemical analysis of paraffin-embedded human breast cancer slide using 23307-1-AP (LGALS3BP Antibody) at dilution of 1:50 (under 10x lens). This data was developed using the same antibody clone with 23307-1-PBS in a different storage buffer formulation.



Immunohistochemical analysis of paraffin-embedded human breast cancer slide using 23307-1-AP (LGALS3BP Antibody) at dilution of 1:50 (under 40x lens). This data was developed using the same antibody clone with 23307-1-PBS in a different storage buffer formulation.



Immunofluorescent analysis of (-20°C Ethanol) fixed HepG2 cells using LGALS3BP antibody (23307-1-AP) at dilution of 1:400 and CoraLite®488-Conjugated Goat Anti-Rabbit IgG(H+L) (SA00013-2). This data was developed using the same antibody clone with 23307-1-PBS in a different storage buffer formulation.