

For Research Use Only

BARD1 Polyclonal antibody

Catalog Number: 22964-1-AP

4 Publications



Basic Information

Catalog Number:

22964-1-AP

Size:

150ul, Concentration: 450 ug/ml by Nanodrop;

Source:

Rabbit

Isotype:

IgG

Immunogen Catalog Number:

AG18965

GenBank Accession Number:

BC126426

GeneID (NCBI):

580

UNIPROT ID:

Q99728

Full Name:

BRCA1 associated RING domain 1

Calculated MW:

777 aa, 87 kDa

Observed MW:

90-100 kDa

Purification Method:

Antigen Affinity purified

Recommended Dilutions:

WB: 1:200-1:1000

Applications

Tested Applications:

WB, ELISA

Cited Applications:

WB

Species Specificity:

human

Cited Species:

human

Positive Controls:

WB: SH-SY5Y cells,

Background Information

BARD1 (BRCA1-associated RING domain protein 1) is a multifunctional protein that interacts with the N-terminal region of BRCA1. In addition to its ability to bind BRCA1 in vivo and in vitro, it shares homology with the 2 most conserved regions of BRCA1: the N-terminal RING motif and the C-terminal BRCT domain. Moreover, BARD1 is central to DNA repair, tumor suppression, and cancer predisposition.

Notable Publications

Author	Pubmed ID	Journal	Application
Yixi Xu	29106372	Elife	WB
Gozde Inci	36500714	Molecules	WB
Shuo Wang	40009463	Am J Physiol Cell Physiol	WB

Storage

Storage:

Store at -20°C. Stable for one year after shipment.

Storage Buffer:

PBS with 0.02% sodium azide and 50% glycerol, pH7.3

Aliquoting is unnecessary for -20°C storage

*** 20ul sizes contain 0.1% BSA

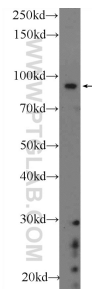
For technical support and original validation data for this product please contact:

T: 1 (888) 4PTGLAB (1-888-478-4522) (toll free in USA), or 1(312) 455-8498 (outside USA)

E: proteintech@ptglab.com
W: ptglab.com

This product is exclusively available under Proteintech Group brand and is not available to purchase from any other manufacturer.

Selected Validation Data



SH-SY5Y cells were subjected to SDS PAGE followed by western blot with 22964-1-AP (BARD1 Antibody) at dilution of 1:300 incubated at room temperature for 1.5 hours.