

For Research Use Only

# MAGI3 Polyclonal antibody

Catalog Number: 22615-1-AP



## Basic Information

<b>Catalog Number:</b> 22615-1-AP	<b>GenBank Accession Number:</b> BC130409	<b>Purification Method:</b> Antigen Affinity purified
<b>Size:</b> 150ul, Concentration: 400 ug/ml by Nanodrop and 340 ug/ml by Bradford method using BSA as the standard;	<b>GeneID (NCBI):</b> 260425	<b>Recommended Dilutions:</b> WB 1:1000-1:4000 IHC 1:200-1:800
<b>Source:</b> Rabbit	<b>UNIPROT ID:</b> Q5TCQ9	
<b>Isotype:</b> IgG	<b>Full Name:</b> membrane associated guanylate kinase, WW and PDZ domain containing 3	
<b>Immunogen Catalog Number:</b> AG18394	<b>Calculated MW:</b> 1481 aa, 163 kDa	
	<b>Observed MW:</b> 140 kDa	

## Applications

<b>Tested Applications:</b> WB, IHC, ELISA	<b>Positive Controls:</b>
<b>Species Specificity:</b> human, mouse, rat	<b>WB:</b> mouse brain tissue, rat brain tissue
<b>Note-IHC: suggested antigen retrieval with TE buffer pH 9.0; (*) Alternatively, antigen retrieval may be performed with citrate buffer pH 6.0</b>	<b>IHC:</b> human ovary cancer tissue,

## Background Information

MAGI proteins are scaffolding proteins, belonging to the Membrane-Associated Guanylate Kinase Inverted proteins of the MAGUK family. There are three members of the MAGI subfamily, MAGI-1, MAGI-2, and MAGI-3. They are comprised of 6 PDZ domains, 2 WW domains, and 1 GUK domain. They have been proven to mediate the transport and signal transduction of various G protein-coupled receptors (GPCRs) (PMID: 29625175). The antibody is specific to MAGI3.

## Storage

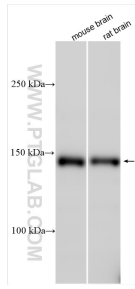
**Storage:**  
Store at -20°C. Stable for one year after shipment.  
**Storage Buffer:**  
PBS with 0.02% sodium azide and 50% glycerol pH 7.3.  
Aliquoting is unnecessary for -20°C storage

\*\*\* 20ul sizes contain 0.1% BSA

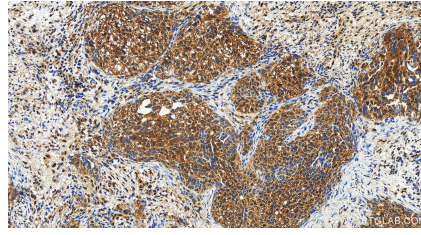
For technical support and original validation data for this product please contact:  
T: 1 (888) 4PTGLAB (1-888-478-4522) (toll free in USA), or 1(312) 455-8498 (outside USA)  
E: proteintech@ptglab.com  
W: ptglab.com

This product is exclusively available under Proteintech Group brand and is not available to purchase from any other manufacturer.

## Selected Validation Data



Various lysates were subjected to SDS PAGE followed by western blot with 22615-1-AP (MAGI3 antibody) at dilution of 1:2000 incubated at room temperature for 1.5 hours.



Immunohistochemical analysis of paraffin-embedded human ovary cancer tissue slide using 22615-1-AP (MAGI3 antibody) at dilution of 1:400 (under 20x lens). Heat mediated antigen retrieval with Tris-EDTA buffer (pH 9.0).