

For Research Use Only

# WDR61 Polyclonal antibody

Catalog Number: 22536-1-AP **4 Publications**



## Basic Information

<b>Catalog Number:</b> 22536-1-AP	<b>GenBank Accession Number:</b> BC010080	<b>Purification Method:</b> Antigen affinity purification
<b>Size:</b> 150ul , Concentration: 450 µg/ml by Nanodrop and 360 µg/ml by Bradford method using BSA as the standard;	<b>GeneID (NCBI):</b> 80349	<b>Recommended Dilutions:</b> WB 1:500-1:3000 IP 0.5-4.0 ug for 1.0-3.0 mg of total protein lysate IHC 1:50-1:500 IF 1:10-1:100
<b>Source:</b> Rabbit	<b>Full Name:</b> WD repeat domain 61	
<b>Isotype:</b> IgG	<b>Calculated MW:</b> 305 aa, 34 kDa	
<b>Immunogen Catalog Number:</b> AG18443	<b>Observed MW:</b> 33 kDa	

## Applications

<b>Tested Applications:</b> IF, IHC, IP, WB, ELISA	<b>Positive Controls:</b> WB : HeLa cells, mouse liver tissue, HepG2 cells IP : mouse brain tissue, IHC : mouse testis tissue, human breast cancer tissue IF : HeLa cells,
<b>Cited Applications:</b> IP, WB	
<b>Species Specificity:</b> human, mouse, rat	
<b>Cited Species:</b> human, mouse	
<b>Note-IHC: suggested antigen retrieval with TE buffer pH 9.0; (*) Alternatively, antigen retrieval may be performed with citrate buffer pH 6.0</b>	

## Background Information

Component of the PAF1 complex (PAF1C) which has multiple functions during transcription by RNA polymerase II and is implicated in regulation of development and maintenance of embryonic stem cell pluripotency (refer to UniProt). Catalog# 22536-1-AP is a rabbit polyclonal antibody raised against the full-length of human WDR61. The MW of this protein is 33 kDa, and this antibody specially recognises the 33 kDa protein.

## Notable Publications

Author	Pubmed ID	Journal	Application
Gang Xiang	35551175	Cell Death Dis	WB
Jiawei Zhao	38218188	Cell	WB,IP
Yajie Liu	37595040	Sci Adv	WB

## Storage

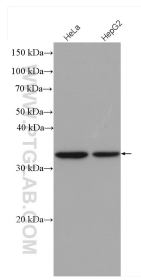
**Storage:**  
Store at -20°C. Stable for one year after shipment.  
**Storage Buffer:**  
PBS with 0.02% sodium azide and 50% glycerol pH 7.3.  
Aliquoting is unnecessary for -20°C storage

\*\*\* 20ul sizes contain 0.1% BSA

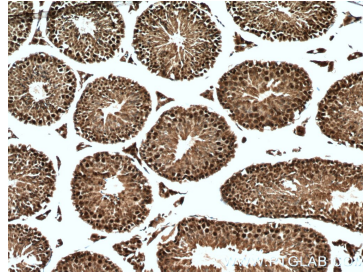
For technical support and original validation data for this product please contact:  
T: 1 (888) 4PTGLAB (1-888-478-4522) (toll free in USA), or 1(312) 455-8498 (outside USA)  
E: proteintech@ptglab.com  
W: ptglab.com

This product is exclusively available under Proteintech Group brand and is not available to purchase from any other manufacturer.

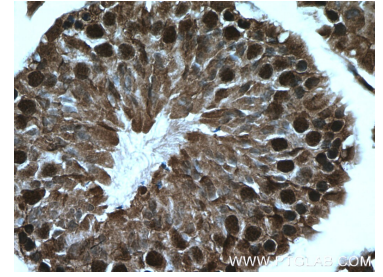
## Selected Validation Data



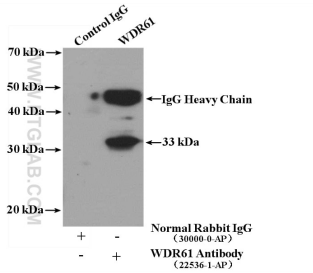
Various lysates were subjected to SDS PAGE followed by western blot with 22536-1-AP (WDR61 antibody) at dilution of 1:1500 incubated at room temperature for 1.5 hours.



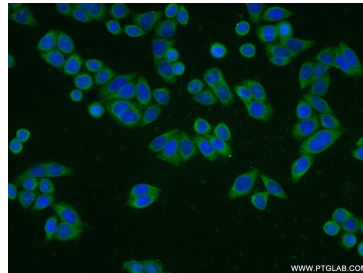
Immunohistochemical analysis of paraffin-embedded mouse testis tissue slide using 22536-1-AP (WDR61 antibody) at dilution of 1:200 (under 10x lens. Heat mediated antigen retrieval with Tris-EDTA buffer (pH 9.0).



Immunohistochemical analysis of paraffin-embedded mouse testis tissue slide using 22536-1-AP (WDR61 antibody) at dilution of 1:200 (under 40x lens. Heat mediated antigen retrieval with Tris-EDTA buffer (pH 9.0).



IP Result of anti-WDR61 (IP:22536-1-AP, 4ug; Detection:22536-1-AP 1:1000) with mouse brain tissue lysate 4000ug.



Immunofluorescent analysis of HeLa cells using 22536-1-AP (WDR61) antibody at dilution of 1:25 and Alexa Fluor 488-conjugated AffiniPure Goat Anti-Rabbit IgG(H+L).