

For Research Use Only

# MSH3 Polyclonal antibody, PBS Only

Catalog Number: 22393-1-PBS

Featured Product



## Basic Information

**Catalog Number:**

22393-1-PBS

**Size:**

100ug, Concentration: 1 mg/ml by Nanodrop;

**Source:**

Rabbit

**Isotype:**

IgG

**Immunogen Catalog Number:**

AG18060

**GenBank Accession Number:**

BC130434

**GeneID (NCBI):**

4437

**UNIPROT ID:**

P20585

**Full Name:**

mutS homolog 3 (E. coli)

**Calculated MW:**

1137 aa, 127 kDa

**Observed MW:**

127 kDa

**Purification Method:**

Antigen affinity purification

## Applications

**Tested Applications:**

WB, IHC, IF/ICC, IP, Indirect ELISA

**Species Specificity:**

human

## Background Information

MSH3 is a DNA mismatch repair (MMR) gene that heterodimerizes with MSH2 to form MutS beta which binds to DNA mismatches thereby initiating DNA repair. It undergoes frequent somatic mutation in colorectal cancers (CRCs) with MMR deficiency. MSH3 mismatch repair protein regulates sensitivity to cytotoxic drugs and a histone deacetylase inhibitor in human colon carcinoma cells (PMID: 23724141, PMID:32671096).

## Storage

**Storage:**

Store at -80°C.

**Storage Buffer:**

PBS Only

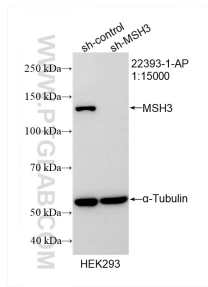
For technical support and original validation data for this product please contact:

T: 1 (888) 4PTGLAB (1-888-478-4522) (toll free in USA), or 1(312) 455-8498 (outside USA)

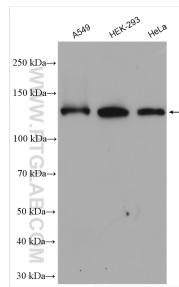
E: [proteintech@ptglab.com](mailto:proteintech@ptglab.com)  
W: [ptglab.com](http://ptglab.com)

**This product is exclusively available under Proteintech Group brand and is not available to purchase from any other manufacturer.**

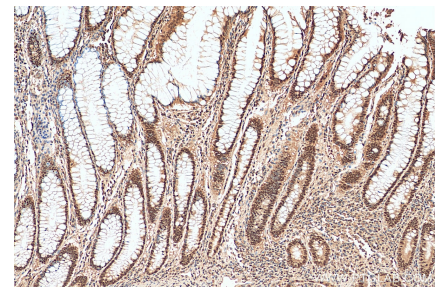
## Selected Validation Data



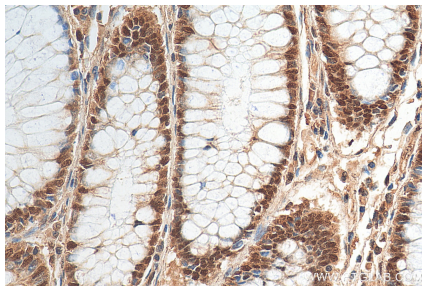
WB result of MSH3 antibody (22393-1-AP; 1:15000; incubated at room temperature for 1.5 hours) with sh-Control and sh-MSH3 transfected HEK-293 cells. This data was developed using the same antibody clone with 22393-1-PBS in a different storage buffer formulation.



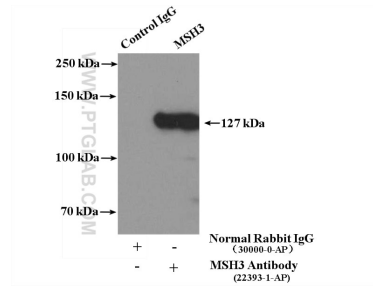
Various lysates were subjected to SDS PAGE followed by western blot with 22393-1-AP (MSH3 antibody) at dilution of 1:10000 incubated at room temperature for 1.5 hours. This data was developed using the same antibody clone with 22393-1-PBS in a different storage buffer formulation.



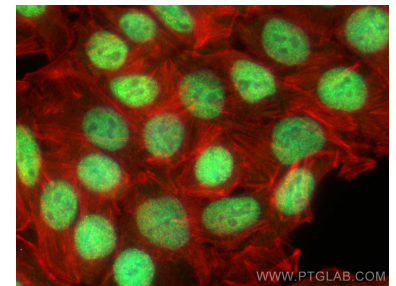
Immunohistochemical analysis of paraffin-embedded human colon cancer tissue slide using 22393-1-AP (MSH3 antibody) at dilution of 1:200 (under 10x lens). Heat mediated antigen retrieval with Tris-EDTA buffer (pH 9.0). This data was developed using the same antibody clone with 22393-1-PBS in a different storage buffer formulation.



Immunohistochemical analysis of paraffin-embedded human colon cancer tissue slide using 22393-1-AP (MSH3 antibody) at dilution of 1:200 (under 40x lens). Heat mediated antigen retrieval with Tris-EDTA buffer (pH 9.0). This data was developed using the same antibody clone with 22393-1-PBS in a different storage buffer formulation.



IP result of anti-MSH3 (IP:22393-1-AP, 4ug; Detection:22393-1-AP 1:1000) with HeLa cells lysate 3600ug. This data was developed using the same antibody clone with 22393-1-PBS in a different storage buffer formulation.



Immunofluorescent analysis of (4% PFA) fixed HT-29 cells using MSH3 antibody (22393-1-AP) at dilution of 1:200 and CoraLite@488-Conjugated AffiniPure Goat Anti-Rabbit IgG(H+L), CL594-phalloidin (red). This data was developed using the same antibody clone with 22393-1-PBS in a different storage buffer formulation.