

For Research Use Only

Giantin Polyclonal antibody

Catalog Number: 22270-1-AP **2 Publications**



Basic Information

Catalog Number: 22270-1-AP	GenBank Accession Number: NM_004487	Purification Method: Antigen affinity purification
Size: 150ul , Concentration: 540 µg/ml by Bradford method using BSA as the standard;	GeneID (NCBI): 2804	Recommended Dilutions: IF 1:20-1:200
Source: Rabbit	Full Name: golgin B1, golgi integral membrane protein	
Isotype: IgG	Calculated MW: 376 kDa	

Applications

Tested Applications: IF, ELISA	Positive Controls: IF : HepG2 cells, HeLa cells
Cited Applications: IF	
Species Specificity: human	
Cited Species: human	

Background Information

Giantin is conserved Golgi membrane protein containing a large cytoplasmic domain. It may function to form the intercisternal cross-bridges of the Golgi complex. Anti-Giantin has been widely used to label the Golgi apparatus.

Notable Publications

Author	Pubmed ID	Journal	Application
Huiying Xue	28769563	Int J Nanomedicine	
Stephen Ireland	32179476	iScience	IF

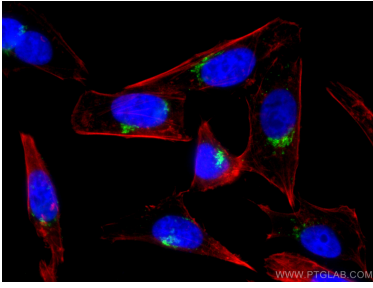
Storage

Storage:
Store at -20°C. Stable for one year after shipment.
Storage Buffer:
PBS with 0.02% sodium azide and 50% glycerol pH 7.3.
Aliquoting is unnecessary for -20°C storage

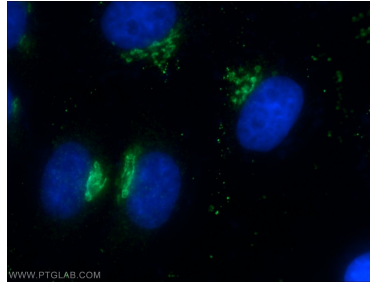
For technical support and original validation data for this product please contact:
T: 1 (888) 4PTGLAB (1-888-478-4522) (toll free in USA), or 1(312) 455-8498 (outside USA)
E: proteintech@ptglab.com
W: ptglab.com

This product is exclusively available under Proteintech Group brand and is not available to purchase from any other manufacturer.

Selected Validation Data



Immunofluorescent analysis of (4% PFA) fixed HepG2 cells using Giantin antibody (22270-1-AP) at dilution of 1:200 and CoraLite® 488-Conjugated AffiniPure Goat Anti-Rabbit IgG(H+L), CL594-Phalloidin (red).



Immunofluorescent analysis of HepG2 cells using 22270-1-AP (Giantin antibody) at dilution of 1:50 and Alexa Fluor 488-conjugated AffiniPure Goat Anti-Rabbit IgG(H+L).