

For Research Use Only

ASF1B-specific Polyclonal antibody, PBS Only



Catalog Number: 22258-1-PBS

Featured Product

Basic Information

Catalog Number:
22258-1-PBS

Size:
100ug, Concentration: 1 mg/ml by
Nanodrop;

Source:
Rabbit

Isotype:
IgG

Immunogen Catalog Number:
AG17763

GenBank Accession Number:
BC010014

GeneID (NCBI):
55723

UNIPROT ID:
Q9NVP2

Full Name:
ASF1 anti-silencing function 1
homolog B (S. cerevisiae)

Calculated MW:
202 aa, 22 kDa

Observed MW:
20-22 kDa

Purification Method:

Antigen affinity purification

Applications

Tested Applications:

WB, IHC, IF/ICC, Indirect ELISA

Species Specificity:

human

Background Information

ASF1B is a member of the H3/H4 family of histone chaperone proteins and is similar to the anti-silencing function-1 gene in yeast. The encoded protein is the substrate of the tousel-like kinase family of cell cycle-regulated kinases and may play a key role in modulating the nucleosome structure of chromatin by ensuring a constant supply of histones at sites of nucleosome assembly. This antibody specifically reacts with the 19kd ASF1B protein.

Storage

Storage:

Store at -80°C.

Storage Buffer:

PBS Only

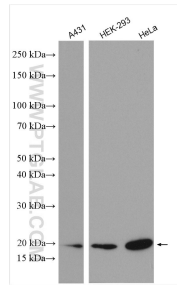
For technical support and original validation data for this product please contact:

T: 1 (888) 4PTGLAB (1-888-478-4522) (toll free
in USA), or 1(312) 455-8498 (outside USA)

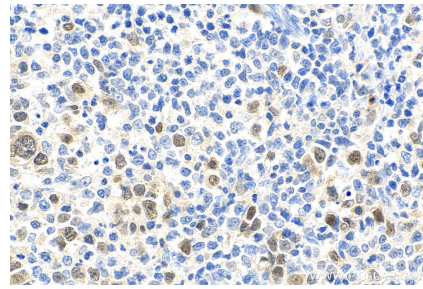
E: proteintech@ptglab.com
W: ptglab.com

This product is exclusively available under Proteintech Group brand and is not available to purchase from any other manufacturer.

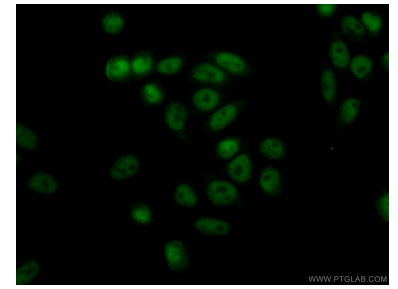
Selected Validation Data



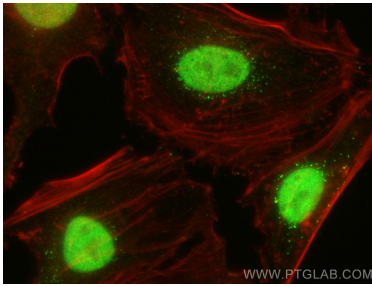
Various lysates were subjected to SDS PAGE followed by western blot with 22258-1-AP (ASF1B-specific antibody) at dilution of 1:1000 incubated at room temperature for 1.5 hours. This data was developed using the same antibody clone with 22258-1-PBS in a different storage buffer formulation.



Immunohistochemical analysis of paraffin-embedded human lymphoma tissue slide using 22258-1-AP (ASF1B-specific antibody) at dilution of 1:200 (under 40x lens). Heat mediated antigen retrieval with Tris-EDTA buffer (pH 9.0). This data was developed using the same antibody clone with 22258-1-PBS in a different storage buffer formulation.



Immunofluorescent analysis of (10% Formaldehyde) fixed HeLa cells using 22258-1-AP (ASF1B antibody) at dilution of 1:50 and Alexa Fluor 488-conjugated AffiniPure Goat Anti-Rabbit IgG(H+L). This data was developed using the same antibody clone with 22258-1-PBS in a different storage buffer formulation.



Immunofluorescent analysis of (4% PFA) fixed HeLa cells using ASF1B-specific antibody (22258-1-AP) at dilution of 1:1000 and Coralite@488-Conjugated Goat Anti-Rabbit IgG(H+L) (SA00013-2), CL594-Phalloidin (red). This data was developed using the same antibody clone with 22258-1-PBS in a different storage buffer formulation.