

For Research Use Only

TLR6 Polyclonal antibody

Catalog Number: 22240-1-AP **5 Publications**



Basic Information

Catalog Number: 22240-1-AP	GenBank Accession Number: BC111755	Purification Method: Antigen affinity purification
Size: 150ul , Concentration: 360 µg/ml by Bradford method using BSA as the standard;	GeneID (NCBI): 10333	Recommended Dilutions: WB 1:500-1:2000
Source: Rabbit	Full Name: toll-like receptor 6	
Isotype: IgG	Calculated MW: 480 aa, 56 kDa	
Immunogen Catalog Number: AG17686	Observed MW: 95-110 kDa	

Applications

Tested Applications: WB, ELISA	Positive Controls: WB : RAW 264.7 cells, human brain tissue, mouse thymus tissue, Jurkat cells, HT-1080 cells
Cited Applications: WB	
Species Specificity: human, mouse	
Cited Species: human, mouse	

Background Information

TLR6, also known as CD286, belongs to the Toll-like receptor (TLR) family which are important in the innate immune response to pathogens. TLRs are highly conserved from Drosophila to human and share structural and functional similarities. TLR6 can form a heterodimer with TLR2. TLR6 and TLR2 both are recruited to the macrophage phagosome, where they recognize peptidoglycan, a Gram-positive pathogen component (PMID: 11095740). TLR6 interacts with CD36, following CD36 stimulation by oxLDL or amyloid-beta 42, and forms a heterodimer with TLR4. The trimeric complex is internalized and triggers inflammatory response.

Notable Publications

Author	Pubmed ID	Journal	Application
Xiaoyu Xie	34649530	BMC Med	WB
Cong Li	31885603	Stem Cells Int	WB
Zhipeng Chen	34029463	J Med Chem	WB

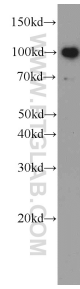
Storage

Storage:
Store at -20°C. Stable for one year after shipment.
Storage Buffer:
PBS with 0.02% sodium azide and 50% glycerol pH 7.3.
Aliquoting is unnecessary for -20°C storage

For technical support and original validation data for this product please contact:
T: 1 (888) 4PTGLAB (1-888-478-4522) (toll free in USA), or 1(312) 455-8498 (outside USA)
E: proteintech@ptglab.com
W: ptglab.com

This product is exclusively available under Proteintech Group brand and is not available to purchase from any other manufacturer.

Selected Validation Data



RAW 264.7 cells were subjected to SDS PAGE followed by western blot with 22240-1-AP (TLR6 antibody) at dilution of 1:1000 incubated at room temperature for 1.5 hours.