

For Research Use Only

BRD2 Polyclonal antibody

Catalog Number: 22236-1-AP

Featured Product

6 Publications



Basic Information

Catalog Number: 22236-1-AP	GenBank Accession Number: BC063840	Purification Method: Antigen affinity purification
Size: 150ul, Concentration: 1500 µg/ml by Nanodrop and 807 µg/ml by Bradford method using BSA as the standard;	GeneID (NCBI): 6046	Recommended Dilutions: WB 1:500-1:1000 IP 0.5-4.0 ug for 1.0-3.0 mg of total protein lysate
Source: Rabbit	Full Name: bromodomain containing 2	
Isotype: IgG	Calculated MW: 836 aa, 92 kDa	
Immunogen Catalog Number: AG17589	Observed MW: 100-110 kDa	

Applications

Tested Applications: IP, WB, ELISA	Positive Controls: WB : HeLa cells, IP : HeLa cells,
Cited Applications: WB	
Species Specificity: human	
Cited Species: human, mouse	

Background Information

Notable Publications

Author	Pubmed ID	Journal	Application
Xing Bian	33134168	Front Oncol	WB
Wenyu Wang	34290255	Nat Commun	WB
Xiangpeng Dai	28805820	Nat Med	WB

Storage

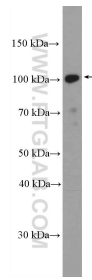
Storage:
Store at -20°C. Stable for one year after shipment.
Storage Buffer:
PBS with 0.02% sodium azide and 50% glycerol pH 7.3.
Aliquoting is unnecessary for -20°C storage

*** 20ul sizes contain 0.1% BSA

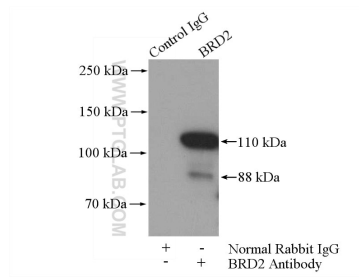
For technical support and original validation data for this product please contact:
T: 1 (888) 4PTGLAB (1-888-478-4522) (toll free in USA), or 1(312) 455-8498 (outside USA)
E: proteintech@ptglab.com
W: ptglab.com

This product is exclusively available under Proteintech Group brand and is not available to purchase from any other manufacturer.

Selected Validation Data



HeLa cells were subjected to SDS PAGE followed by western blot with 22236-1-AP (BRD2 Antibody) at dilution of 1:600 incubated at room temperature for 1.5 hours.



IP Result of anti-BRD2 (IP:22236-1-AP, 4ug; Detection:22236-1-AP 1:300) with HeLa cells lysate 1200ug.