

For Research Use Only

Paxillin Polyclonal antibody

Catalog Number: 22172-1-AP **6 Publications**



Basic Information

Catalog Number: 22172-1-AP	GenBank Accession Number: BC136787	Purification Method: Antigen affinity purification
Size: 150ul, Concentration: 600 µg/ml by Nanodrop and 333 µg/ml by Bradford method using BSA as the standard;	GeneID (NCBI): 5829	Recommended Dilutions: WB 1:200-1:1000 IHC 1:20-1:200 IF 1:20-1:200
Source: Rabbit	Full Name: paxillin	
Isotype: IgG	Calculated MW: 591 aa, 65 kDa	
Immunogen Catalog Number: AG17702		

Applications

Tested Applications: IF, IHC, WB, ELISA	Positive Controls: WB : RAW 264.7 cells,
Cited Applications: IHC, WB	IHC : human breast cancer tissue, human stomach cancer tissue
Species Specificity: human, Canine, mouse	IF : MDCK cells,
Cited Species: human	

Note-IHC: suggested antigen retrieval with TE buffer pH 9.0; (*) Alternatively, antigen retrieval may be performed with citrate buffer pH 6.0

Background Information

Notable Publications

Author	Pubmed ID	Journal	Application
ShanWang	34599264	Sci Rep	WB
Lai Jin	30849520	Cell Signal	WB
Lupeng Wang	31173185	Int J Oncol	WB

Storage

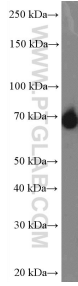
Storage:
Store at -20°C. Stable for one year after shipment.
Storage Buffer:
PBS with 0.02% sodium azide and 50% glycerol pH 7.3.
Aliquoting is unnecessary for -20°C storage

***** 20ul sizes contain 0.1% BSA**

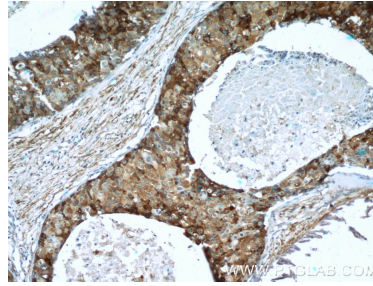
For technical support and original validation data for this product please contact:
T: 1 (888) 4PTGLAB (1-888-478-4522) (toll free in USA), or 1(312) 455-8498 (outside USA)
E: proteintech@ptglab.com
W: ptglab.com

This product is exclusively available under Proteintech Group brand and is not available to purchase from any other manufacturer.

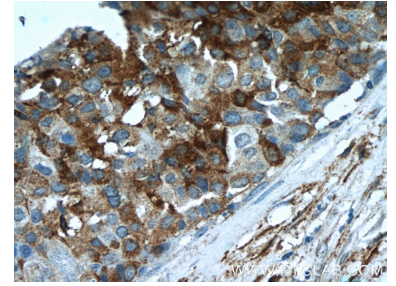
Selected Validation Data



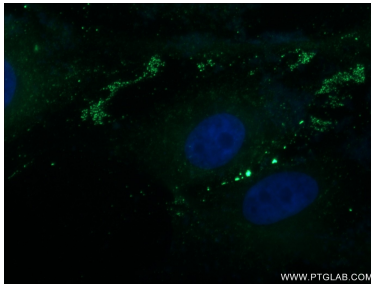
RAW 264.7 cells were subjected to SDS PAGE followed by western blot with 22172-1-AP (Paxillin antibody at dilution of 1:300 incubated at room temperature for 1.5 hours.



Immunohistochemical analysis of paraffin-embedded human breast cancer tissue slide using 22172-1-AP (Paxillin antibody at dilution of 1:50 (under 10x lens).



Immunohistochemical analysis of paraffin-embedded human breast cancer tissue slide using 22172-1-AP (Paxillin antibody at dilution of 1:50 (under 40x lens).



Immunofluorescent analysis of MDCK cells using 22172-1-AP (Paxillin antibody) at dilution of 1:50 and Alexa Fluor 488-conjugated AffiniPure Goat Anti-Rabbit IgG(H+L).