

For Research Use Only

KCNMA1 Polyclonal antibody

Catalog Number: 22158-1-AP



Basic Information

| | | |
|---|---|--|
| Catalog Number: 22158-1-AP | GenBank Accession Number: BC137115 | Purification Method: Antigen affinity purification |
| Size: 150ul , Concentration: 200 ug/ml by Nanodrop; | GeneID (NCBI): 3778 | Recommended Dilutions: WB 1:500-1:1000 |
| Source: Rabbit | UNIPROT ID: Q12791 | |
| IsoType: IgG | Full Name: potassium large conductance calcium-activated channel, subfamily M, alpha member 1 | |
| Immunogen Catalog Number: AG17802 | Calculated MW: 1236 aa, 138 kDa | |
| | Observed MW: ~130 kDa | |

Applications

| | |
|--|--|
| Tested Applications: WB, ELISA | Positive Controls: WB : mouse brain membrane protein, rat brain membrane protein |
| Species Specificity: human, mouse, rat | |

Background Information

Calcium-activated potassium channel subunit alpha-1 also known as large conductance calcium-activated potassium channel, subfamily M, alpha member 1 (KCa1.1), or BK channel alpha subunit, is a voltage-gated potassium channel encoded by the KCNMA1 gene and characterized by their large conductance of potassium ions (K⁺) through cell membranes. KCNMA1 is widely distributed in human cell membranes, especially in muscle cells and neurons. They regulate the excitability of cells through sensitivity to calcium ions (Ca²⁺) and voltage, thereby affecting key physiological processes such as muscle contraction and nerve signal transduction.

Storage

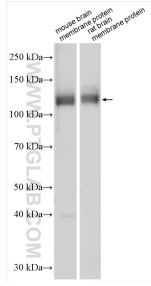
Storage:
Store at -20°C. Stable for one year after shipment.
Storage Buffer:
PBS with 0.02% sodium azide and 50% glycerol pH 7.3.
Aliquoting is unnecessary for -20°C storage

*** 20ul sizes contain 0.1% BSA

For technical support and original validation data for this product please contact:
T: 1 (888) 4PTGLAB (1-888-478-4522) (toll free in USA), or 1(312) 455-8498 (outside USA)
E: proteintech@ptglab.com
W: ptglab.com

This product is exclusively available under Proteintech Group brand and is not available to purchase from any other manufacturer.

Selected Validation Data



Various lysates were subjected to SDS PAGE followed by western blot with 22158-1-AP (KCNMA1 antibody) at dilution of 1:600 incubated at room temperature for 1.5 hours.