

For Research Use Only

# LY6E Polyclonal antibody, PBS Only

Catalog Number: 22144-1-PBS

Featured Product



## Basic Information

**Catalog Number:**

22144-1-PBS

**Size:**

100ug, Concentration: 1 mg/ml by Nanodrop;

**Source:**

Rabbit

**Isotype:**

IgG

**Immunogen Catalog Number:**

AG17573

**GenBank Accession Number:**

BC119708

**GeneID (NCBI):**

4061

**UNIPROT ID:**

Q16553

**Full Name:**

lymphocyte antigen 6 complex, locus E

**Calculated MW:**

131 aa, 14 kDa

**Observed MW:**

12-16 kDa

**Purification Method:**

Antigen affinity purification

## Applications

**Tested Applications:**

WB, ELISA

**Species Specificity:**

human, mouse

## Background Information

The predicted MW of LY6E is 13 kDa. Catalog#22144-1-AP recognises two band of 13 kDa and 18 kDa, and the additional 18 kDa band may be due to glycosylation.

## Storage

**Storage:**

Store at -80°C.

**Storage Buffer:**

PBS Only

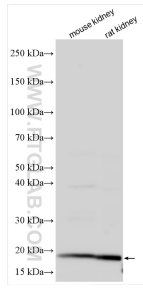
For technical support and original validation data for this product please contact:

T: 1 (888) 4PTGLAB (1-888-478-4522) (toll free in USA), or 1(312) 455-8498 (outside USA)

E: [proteintech@ptglab.com](mailto:proteintech@ptglab.com)  
W: [ptglab.com](http://ptglab.com)

This product is exclusively available under Proteintech Group brand and is not available to purchase from any other manufacturer.

## Selected Validation Data



Various lysates were subjected to SDS PAGE followed by western blot with 22144-1-AP (LY6E antibody) at dilution of 1:1000 incubated at room temperature for 1.5 hours. This data was developed using the same antibody clone with 22144-1-PBS in a different storage buffer formulation.