

For Research Use Only

# ZFP161 / ZBTB14 Polyclonal antibody

Catalog Number: 22056-1-AP



## Basic Information

<b>Catalog Number:</b> 22056-1-AP	<b>GenBank Accession Number:</b> BC110519	<b>Purification Method:</b> Antigen affinity purification
<b>Size:</b> 150ul , Concentration: 700 ug/ml by Nanodrop;	<b>GeneID (NCBI):</b> 7541	<b>Recommended Dilutions:</b> WB 1:1000-1:6000
<b>Source:</b> Rabbit	<b>UNIPROT ID:</b> O43829	
<b>Isotype:</b> IgG	<b>Full Name:</b> zinc finger protein 161 homolog (mouse)	
<b>Immunogen Catalog Number:</b> AG17082	<b>Calculated MW:</b> 449 aa, 51 kDa	
	<b>Observed MW:</b> 55 kDa	

## Applications

<b>Tested Applications:</b> WB, ELISA	<b>Positive Controls:</b> WB : HEK-293 cells, L02 cells
<b>Species Specificity:</b> human	

## Background Information

ZBTB14, also named as :ZFP161, ZNF478, is a 449 amino acid protein, which interacts with ZBTB21. ZBTB14, is a transcriptional activator of the dopamine transporter (DAT), binding it's promoter at the consensus sequence 5'-CCTGCACAGTTCACGGA-3'. ZBTB14 Binds to 5'-d(GCC)(n)-3' trinucleotide repeats in promoter regions and acts as a repressor of the FMR1 gene. The calculated MW of ZFP161 is 52 kDa, 22056-1-AP can detect a band around 55 kDa.

## Storage

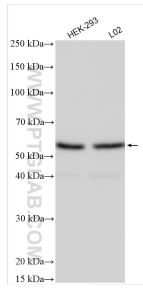
**Storage:**  
Store at -20°C. Stable for one year after shipment.  
**Storage Buffer:**  
PBS with 0.02% sodium azide and 50% glycerol pH 7.3.  
Aliquoting is unnecessary for -20°C storage

\*\*\* 20ul sizes contain 0.1% BSA

For technical support and original validation data for this product please contact:  
T: 1 (888) 4PTGLAB (1-888-478-4522) (toll free in USA), or 1(312) 455-8498 (outside USA)  
E: proteintech@ptglab.com  
W: ptglab.com

This product is exclusively available under Proteintech Group brand and is not available to purchase from any other manufacturer.

## Selected Validation Data



Various lysates were subjected to SDS PAGE followed by western blot with 22056-1-AP (ZFP161 antibody) at dilution of 1:3000 incubated at room temperature for 1.5 hours.