

For Research Use Only

POLD3 Polyclonal antibody

Catalog Number: 21935-1-AP

Featured Product

6 Publications



Basic Information

Catalog Number:
21935-1-AP

Size:
150ul, Concentration: 550 ug/ml by Nanodrop and 373 ug/ml by Bradford method using BSA as the standard;

Source:
Rabbit

Isotype:
IgG

Immunogen Catalog Number:
AG16570

GenBank Accession Number:
BC108908

GeneID (NCBI):
10714

UNIPROT ID:
Q15054

Full Name:
polymerase (DNA-directed), delta 3, accessory subunit

Calculated MW:
466 aa, 51 kDa

Observed MW:
51-70 kDa

Purification Method:
Antigen affinity purification

Recommended Dilutions:
WB 1:500-1:2000
IP 0.5-4.0 ug for 1.0-3.0 mg of total protein lysate
IHC 1:50-1:500

Applications

Tested Applications:
WB, IP, IHC, ELISA

Cited Applications:
WB

Species Specificity:
human, mouse, rat

Cited Species:
human, mouse

Note-IHC: suggested antigen retrieval with TE buffer pH 9.0; (*) Alternatively, antigen retrieval may be performed with citrate buffer pH 6.0

Positive Controls:

WB: MCF-7 cells, mouse testis tissue, rat testis tissue

IP: MCF-7 cells,

IHC: human breast cancer tissue, human cervical cancer tissue

Notable Publications

Author	Pubmed ID	Journal	Application
Zhe Yang	32883681	Genes Dev	WB
Zhe Yang	36229075	Genes Dev	WB
Nada Kojak	38597682	Nucleic Acids Res	WB

Storage

Storage:

Store at -20°C. Stable for one year after shipment.

Storage Buffer:

PBS with 0.02% sodium azide and 50% glycerol pH 7.3.

Aliquoting is unnecessary for -20°C storage

*** 20ul sizes contain 0.1% BSA

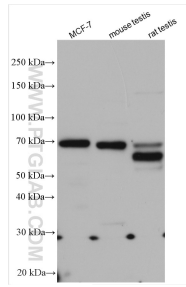
For technical support and original validation data for this product please contact:

T: 1 (888) 4PTGLAB (1-888-478-4522) (toll free in USA), or 1(312) 455-8498 (outside USA)

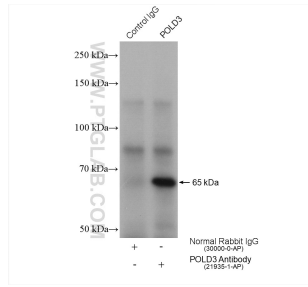
E: proteintech@ptglab.com
W: ptglab.com

This product is exclusively available under Proteintech Group brand and is not available to purchase from any other manufacturer.

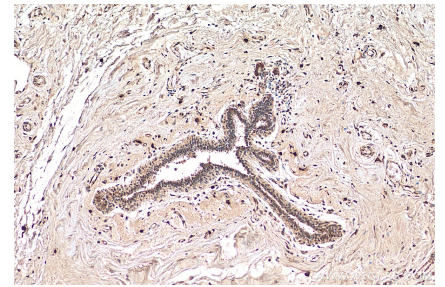
Selected Validation Data



Various lysates were subjected to SDS PAGE followed by western blot with 21935-1-AP (POLD3 antibody) at dilution of 1:1000 incubated at room temperature for 1.5 hours.



IP result of anti-POLD3 (IP:21935-1-AP, 4ug; Detection:21935-1-AP 1:500) with MCF-7 cells lysate 640 ug.



Immunohistochemical analysis of paraffin-embedded human breast cancer tissue slide using 21935-1-AP (POLD3 antibody) at dilution of 1:200 (under 10x lens). Heat mediated antigen retrieval with Tris-EDTA buffer (pH 9.0).