

For Research Use Only

L1TD1 Polyclonal antibody, PBS Only

Catalog Number: 21528-1-PBS



Basic Information

Catalog Number:

21528-1-PBS

Size:

100ug , Concentration: 1 mg/ml by Nanodrop;

Source:

Rabbit

Isotype:

IgG

Immunogen Catalog Number:

AG16147

GenBank Accession Number:

BC111559

GeneID (NCBI):

54596

UNIPROT ID:

Q5T7N2

Full Name:

LINE-1 type transposase domain containing 1

Calculated MW:

865 aa, 99 kDa

Observed MW:

100 kDa

Purification Method:

Antigen affinity purification

Applications

Tested Applications:

WB, IHC, IF/ICC, Indirect ELISA

Species Specificity:

human

Background Information

L1TD1 is an RNA-binding protein highly and specifically expressed in pluripotent cells. It is essential for maintaining the pluripotency in human embryonic stem cells (hESCs) and has been considered as a marker for undifferentiated hESCs. L1TD1 is also reported to be highly expressed in medulloblastoma cells and its expression in medulloblastoma correlates with poor clinical outcome.

Storage

Storage:

Store at -80°C.

Storage Buffer:

PBS Only

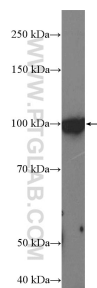
For technical support and original validation data for this product please contact:

T: 1 (888) 4PTGLAB (1-888-478-4522) (toll free in USA), or 1(312) 455-8498 (outside USA)

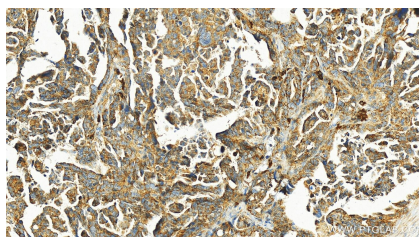
E: proteintech@ptglab.com
W: ptglab.com

This product is exclusively available under Proteintech Group brand and is not available to purchase from any other manufacturer.

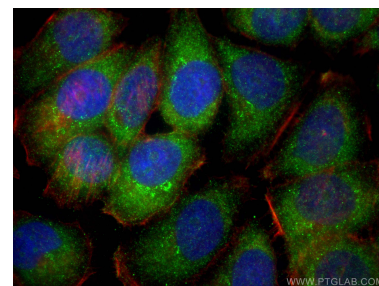
Selected Validation Data



WB result of L1TD1 antibody (21528-1-AP, 1:500) with NCCIT cells. This data was developed using the same antibody clone with 21528-1-PBS in a different storage buffer formulation.



Immunohistochemical analysis of paraffin-embedded human ovarian cancer slide using 21528-1-AP (L1TD1 antibody) at dilution of 1:1000 (under 20x lens). Heat mediated antigen retrieval with Tris-EDTA buffer (pH 9.0). This data was developed using the same antibody clone with 21528-1-PBS in a different storage buffer formulation.



Immunofluorescent analysis of (-20°C Ethanol) fixed NCCIT cells using L1TD1 antibody (21528-1-AP) at dilution of 1:200 and Multi-rAb CoraLite® Plus 488-Goat Anti-Rabbit Recombinant Secondary Antibody (H+L) (RGAR002), CL594-phalloidin (red). This data was developed using the same antibody clone with 21528-1-PBS in a different storage buffer formulation.