

For Research Use Only

SMMHC Polyclonal antibody

Catalog Number: 21404-1-AP **49 Publications**



Basic Information

Catalog Number: 21404-1-AP	GenBank Accession Number: BC104906	Purification Method: Antigen affinity purification
Size: 150ul , Concentration: 700 ug/ml by Nanodrop;	GeneID (NCBI): 4629	Recommended Dilutions: WB 1:1000-1:4000 IHC 1:1000-1:4000 IF-P 1:50-1:500
Source: Rabbit	UNIPROT ID: P35749	
Isotype: IgG	Full Name: myosin, heavy chain 11, smooth muscle	
Immunogen Catalog Number: AG16114	Calculated MW: 1979 aa, 228 kDa	
	Observed MW: 200 kDa	

Applications

Tested Applications:
WB, IHC, IF-P, FC (Intra), ELISA

Cited Applications:
WB, IHC, IF

Species Specificity:
human, mouse, rat

Cited Species:
human, mouse, rat

Note-IHC: suggested antigen retrieval with TE buffer pH 9.0; (*) Alternatively, antigen retrieval may be performed with citrate buffer pH 6.0

Positive Controls:

WB : mouse uterus tissue,

IHC : human colon tissue, rat eye tissue, mouse eye tissue, rat bladder tissue, human skeletal muscle tissue

IF-P : mouse heart tissue,

Background Information

SMMHC (smooth muscle myosin heavy chain; MYH11) is a contractile protein of smooth muscle cells. It is specifically expressed in cells derived from smooth muscle lineages. SMMHC is used as vascular smooth muscle cell (vSMC) contractile marker. It is also an excellent marker for myoepithelial cells, with no or few cross-reaction with myofibroblasts, thus very useful in the evaluation of stromal invasion.

Notable Publications

Author	Pubmed ID	Journal	Application
Jinghan Lin	36155059	Biochem Biophys Res Commun	WB
Ziqing Li	32886850	Acta Physiol (Oxf)	WB
Yuanyuan Li	34732321	Immunol Lett	WB, IF

Storage

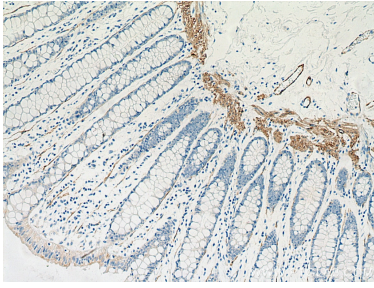
Storage:
Store at -20°C. Stable for one year after shipment.
Storage Buffer:
PBS with 0.02% sodium azide and 50% glycerol, pH7.3
Aliquoting is unnecessary for -20°C storage

***** 20ul sizes contain 0.1% BSA**

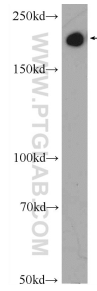
For technical support and original validation data for this product please contact:
T: 1 (888) 4PTGLAB (1-888-478-4522) (toll free in USA), or 1(312) 455-8498 (outside USA)
E: proteintech@ptglab.com
W: ptglab.com

This product is exclusively available under Proteintech Group brand and is not available to purchase from any other manufacturer.

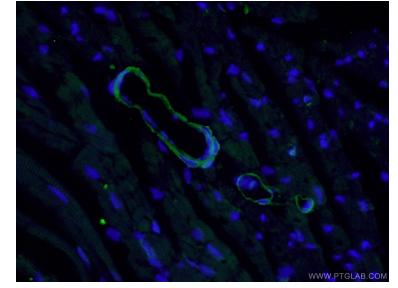
Selected Validation Data



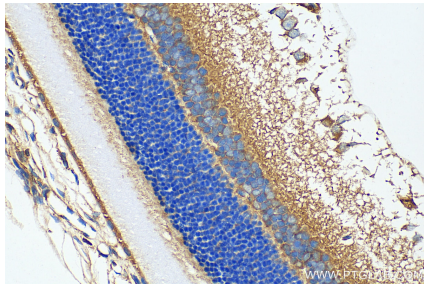
Immunohistochemical analysis of paraffin-embedded human colon tissue slide using 21404-1-AP (SMMHC antibody) at dilution of 1:2000 (under 10x lens). Heat mediated antigen retrieval with Tris-EDTA buffer (pH 9.0).



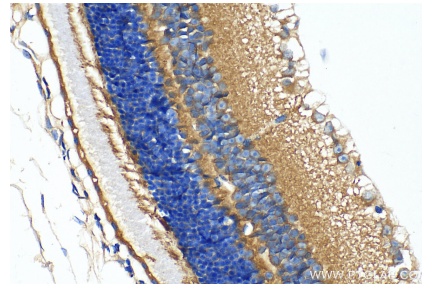
mouse uterus tissue were subjected to SDS PAGE followed by western blot with 21404-1-AP (SMMHC antibody at dilution of 1:2000 incubated at room temperature for 1.5 hours.



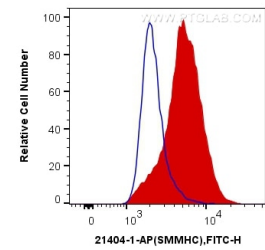
Immunofluorescent analysis of (4% PFA) fixed mouse heart tissue using 21404-1-AP (SMMHC antibody) at dilution of 1:50 and Alexa Fluor 488-conjugated Goat Anti-Rabbit IgG(H+L).



Immunohistochemical analysis of paraffin-embedded rat eye tissue slide using 21404-1-AP (SMMHC antibody) at dilution of 1:2000 (under 40x lens). Heat mediated antigen retrieval with Tris-EDTA buffer (pH 9.0).



Immunohistochemical analysis of paraffin-embedded mouse eye tissue slide using 21404-1-AP (SMMHC antibody) at dilution of 1:2000 (under 40x lens). Heat mediated antigen retrieval with Tris-EDTA buffer (pH 9.0).



1×10^6 C2C12 cells were intracellularly stained with 0.4 ug Anti-Human SMMHC (21404-1-AP) and CoraLite®488-Conjugated Goat Anti-Rabbit IgG(H+L) at dilution 1:1000 (red), or 0.4 ug Control Antibody. Cells were fixed with 4% PFA and permeabilized with Flow Cytometry Perm Buffer (PF00011-C).