

For Research Use Only

LRRC17 Polyclonal antibody

Catalog Number: 20918-1-AP

Featured Product

2 Publications



Basic Information

Catalog Number: 20918-1-AP	GenBank Accession Number: BC027903	Purification Method: Antigen Affinity purified
Size: 150ul , Concentration: 350 µg/ml by Nanodrop and 280 µg/ml by Bradford method using BSA as the standard;	GeneID (NCBI): 10234	Recommended Dilutions: WB 1:200-1:1000
Source: Rabbit	Full Name: leucine rich repeat containing 17	
Isotype: IgG	Calculated MW: 441 aa, 52 kDa	
Immunogen Catalog Number: AG15117	Observed MW: 52 kDa	

Applications

Tested Applications: WB, ELISA	Positive Controls: WB : HeLa cells, mouse heart tissue
Cited Applications: WB	
Species Specificity: human, mouse	
Cited Species: human, mouse	

Background Information

Leucine-rich repeat-containing protein 17 (LRRC17) is an LRR protein predominantly expressed by osteoblasts. LRRC17 acts as a negative regulator of receptor activator of NF-kappaB ligand (RANKL)-induced osteoclast differentiation (PMID: 19336404). It has been reported that low plasma level of LRRC17 is an independent risk factor for osteoporotic fractures (PMID: 27355564).

Notable Publications

Author	Pubmed ID	Journal	Application
Da Song	33986831	Exp Ther Med	WB
Fei Liu	33865167	Redox Biol	WB

Storage

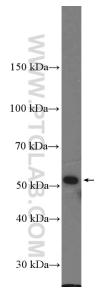
Storage:
Store at -20°C. Stable for one year after shipment.
Storage Buffer:
PBS with 0.02% sodium azide and 50% glycerol pH 7.3.
Aliquoting is unnecessary for -20°C storage

*** 20ul sizes contain 0.1% BSA

For technical support and original validation data for this product please contact:
T: 1 (888) 4PTGLAB (1-888-478-4522) (toll free in USA), or 1(312) 455-8498 (outside USA)
E: proteintech@ptglab.com
W: ptglab.com

This product is exclusively available under Proteintech Group brand and is not available to purchase from any other manufacturer.

Selected Validation Data



HeLa cells were subjected to SDS PAGE followed by western blot with 20918-1-AP (LRRC17 Antibody) at dilution of 1:300 incubated at room temperature for 1.5 hours.