

Fibrinogen Alpha Chain Polyclonal antibody

Catalog Number: 20645-1-AP

Featured Product

8 Publications

Basic Information

Catalog Number: 20645-1-AP	GenBank Accession Number: BC020764	Purification Method: Antigen affinity purification
Size: 150ul , Concentration: 400 µg/ml by Nanodrop;	GeneID (NCBI): 2243	Recommended Dilutions: WB 1:500-1:3000 IHC 1:50-1:500
Source: Rabbit	Full Name: fibrinogen alpha chain	
Isotype: IgG	Calculated MW: 866 aa, 95 kDa	
Immunogen Catalog Number: AG9567	Observed MW: 60 kDa	

Applications

Tested Applications: IHC, WB, ELISA	Positive Controls:
Cited Applications: IF, IHC, IP, WB	WB : mouse liver tissue,
Species Specificity: human, mouse	IHC : human liver tissue,
Cited Species: human, mouse	
Note-IHC: suggested antigen retrieval with TE buffer pH 9.0; (*) Alternatively, antigen retrieval may be performed with citrate buffer pH 6.0	

Background Information

Fibrinogen is a soluble plasma glycoprotein synthesized in the liver. It is composed of two sets of three structurally different subunits: alpha (FGA), beta (FGB), gamma (FGG). Fibrinogen is converted by thrombin into fibrin during blood coagulation. Fibrinogen and fibrin play overlapping roles in blood clotting, fibrinolysis, cellular and matrix interactions, the inflammatory response, wound healing, and neoplasia (PMID: 16102057). FGA is the alpha chain of fibrinogen. During conversion of fibrinogen to fibrin, fibrinopeptide A is cleaved from FGA by thrombin.

Notable Publications

Author	Pubmed ID	Journal	Application
Di-Wei Zheng	32999289	Nat Commun	IF
L G Poole	30415489	J Thromb Haemost	
Eugene V Golanov	31191233	Front Neurosci	WB, IHC, IF

Storage

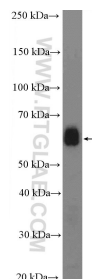
Storage:
Store at -20°C. Stable for one year after shipment.
Storage Buffer:
PBS with 0.02% sodium azide and 50% glycerol pH 7.3.
 Aliquoting is unnecessary for -20°C storage

*** 20ul sizes contain 0.1% BSA

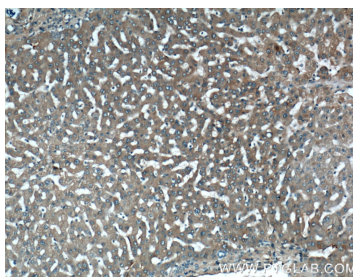
For technical support and original validation data for this product please contact:
 T: 1 (888) 4PTGLAB (1-888-478-4522) (toll free in USA), or 1(312) 455-8498 (outside USA)
 E: proteintech@ptglab.com
 W: ptglab.com

This product is exclusively available under Proteintech Group brand and is not available to purchase from any other manufacturer.

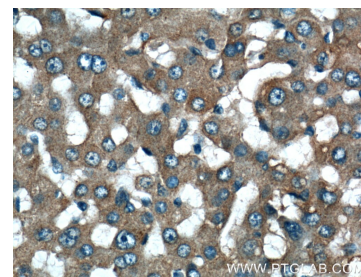
Selected Validation Data



mouse liver tissue were subjected to SDS PAGE followed by western blot with 20645-1-AP (Fibrinogen alpha chain antibody) at dilution of 1:1500 incubated at room temperature for 1.5 hours.



Immunohistochemical analysis of paraffin-embedded human liver tissue slide using 20645-1-AP (Fibrinogen alpha chain antibody) at dilution of 1:200 (under 10x lens).



Immunohistochemical analysis of paraffin-embedded human liver tissue slide using 20645-1-AP (Fibrinogen alpha chain antibody) at dilution of 1:200 (under 40x lens).