

For Research Use Only

RIG-1/DDX58 Polyclonal antibody, PBS Only



Catalog Number: 20566-1-PBS

Featured Product

Basic Information

Catalog Number:

20566-1-PBS

Size:

100ug, Concentration: 1 mg/ml by Nanodrop;

Source:

Rabbit

Isotype:

IgG

GenBank Accession Number:

NM_014314

GeneID (NCBI):

23586

UNIPROT ID:

O95786

Full Name:

DEAD (Asp-Glu-Ala-Asp) box

polypeptide 58

Calculated MW:

106 kDa

Observed MW:

101-106 kDa

Purification Method:

Antigen affinity purification

Applications

Tested Applications:

WB, IF/ICC, IP, Indirect ELISA

Species Specificity:

human, mouse, rat

Background Information

DDX58, also named as RIG-1, belongs to the helicase family. It is involved in innate immune defense against viruses. Upon interaction with intracellular dsRNA produced during viral replication, triggers a transduction cascade involving MAVS/IPS1, which results in the activation of NF-kappa-B, IRF3 and IRF7 and the induction of the expression of antiviral cytokines such as IFN-beta and RANTES (CCL5). Detects dsRNA produced from non-self dsDNA by RNA polymerase III, such as Epstein-Barr virus-encoded RNAs (EBERs). It is essential for the production of interferons in response to RNA viruses including paramyxoviruses, influenza viruses, Japanese encephalitis virus and HCV. The antibody is specific to DDX58.

Storage

Storage:

Store at -80°C.

Storage Buffer:

PBS Only

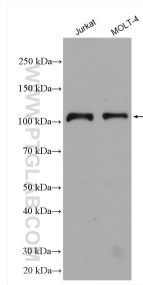
For technical support and original validation data for this product please contact:

T: 1 (888) 4PTGLAB (1-888-478-4522) (toll free in USA), or 1(312) 455-8498 (outside USA)

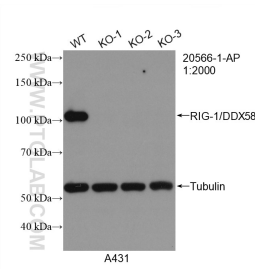
E: proteintech@ptglab.com
W: ptglab.com

This product is exclusively available under Proteintech Group brand and is not available to purchase from any other manufacturer.

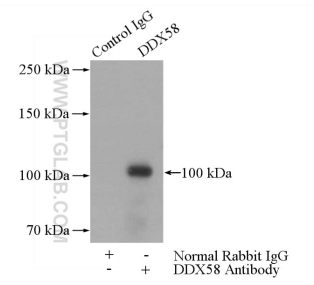
Selected Validation Data



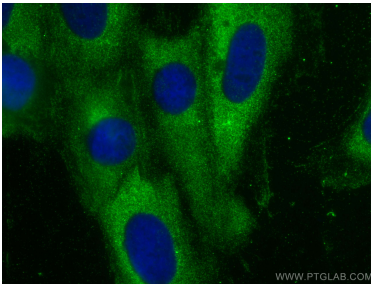
Various lysates were subjected to SDS PAGE followed by western blot with 20566-1-AP (RIG-1/DDX58 antibody) at dilution of 1:3000 incubated at room temperature for 1.5 hours. This data was developed using the same antibody clone with 20566-1-PBS in a different storage buffer formulation.



WB result of RIG-1/DDX58 antibody (20566-1-AP; 1:2000; room temperature for 1.5 hours) with wild-type and RIG-1/DDX58 knockout A431 cells. This data was developed using the same antibody clone with 20566-1-PBS in a different storage buffer formulation.



IP result of anti-RIG-1/DDX58 (IP:20566-1-AP, 4ug; Detection:20566-1-AP 1:300) with HepG2 cells lysate 3600ug. This data was developed using the same antibody clone with 20566-1-PBS in a different storage buffer formulation.



Immunofluorescent analysis of (-20°C Methanol) fixed H9C2 cells using RIG-1/DDX58 antibody (20566-1-AP) at dilution of 1:400 and CoraLite®488-Conjugated AffiniPure Goat Anti-Rabbit IgG(H+L). This data was developed using the same antibody clone with 20566-1-PBS in a different storage buffer formulation.