

For Research Use Only

# RNF6 Polyclonal antibody, PBS Only

Catalog Number: 20437-1-PBS

Featured Product



## Basic Information

**Catalog Number:**

20437-1-PBS

**Size:**

100ug, Concentration: 1 mg/ml by Nanodrop;

**Source:**

Rabbit

**Isotype:**

IgG

**Immunogen Catalog Number:**

AG14209

**GenBank Accession Number:**

BC034688

**GeneID (NCBI):**

6049

**UNIPROT ID:**

Q9Y252

**Full Name:**

ring finger protein (C3H2C3 type) 6

**Calculated MW:**

685 aa, 78 kDa

**Observed MW:**

78 kDa

**Purification Method:**

Antigen affinity purification

## Applications

**Tested Applications:**

WB, IF/ICC, IP, Indirect ELISA

**Species Specificity:**

human, mouse

## Background Information

RNF6 was firstly cloned in a genetic study of chromosomal rearrangements in myeloproliferative disorders, mapping to chromosome 13q12.12 [PMID:10331950]. It containing a coiled-coil domain at the N-terminus, and a RING-H2 finger at the C-terminus which is responsible for its ubiquitin ligase activity. It also activate Inha gene expression by participating in a protein complex binding to the promoter region [PMID:11971979]. In addition, LIMK1 is a substrate of RNF6 and the RNF6-induced LIMK1 polyubiquitination is mediated via K48 of ubiquitin and leads to proteasomal degradation of the kinase [PMID:16204183].

## Storage

**Storage:**

Store at -80°C.

**Storage Buffer:**

PBS Only

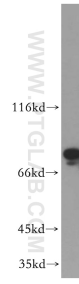
For technical support and original validation data for this product please contact:

T: 1 (888) 4PTGLAB (1-888-478-4522) (toll free in USA), or 1(312) 455-8498 (outside USA)

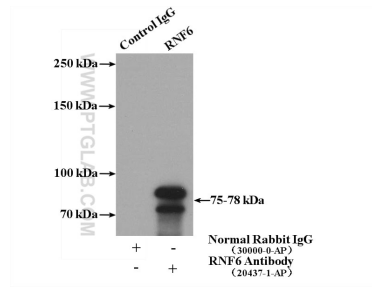
E: [proteintech@ptglab.com](mailto:proteintech@ptglab.com)  
W: [ptglab.com](http://ptglab.com)

**This product is exclusively available under Proteintech Group brand and is not available to purchase from any other manufacturer.**

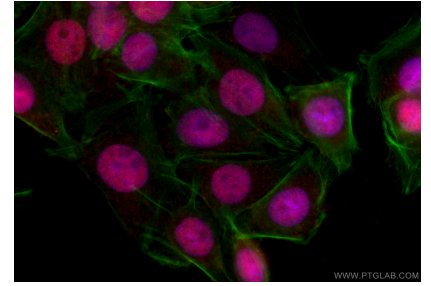
## Selected Validation Data



mouse testis tissue were subjected to SDS PAGE followed by western blot with 20437-1-AP (RNF6 antibody) at dilution of 1:800 incubated at room temperature for 1.5 hours. This data was developed using the same antibody clone with 20437-1-PBS in a different storage buffer formulation.



IP result of anti-RNF6 (IP:20437-1-AP, 4ug; Detection:20437-1-AP 1:800) with mouse testis tissue lysate 4000ug. This data was developed using the same antibody clone with 20437-1-PBS in a different storage buffer formulation.



Immunofluorescent analysis of (4% PFA) fixed SW480 cells using RNF6 antibody (20437-1-AP) at dilution of 1:200 and CoraLite®594-Conjugated Goat Anti-Rabbit IgG(H+L) (SA00013-4), CL488-phalloidin (green). This data was developed using the same antibody clone with 20437-1-PBS in a different storage buffer formulation.