

For Research Use Only

ADAM17-Specific Polyclonal antibody



Catalog Number: 20259-1-AP

2 Publications

Basic Information

Catalog Number: 20259-1-AP	GenBank Accession Number: NM_003183	Purification Method: Antigen affinity purification
Size: 150ul , Concentration: 350 µg/ml by Nanodrop and 227 µg/ml by Bradford method using BSA as the standard;	GeneID (NCBI): 6868	Recommended Dilutions: WB 1:500-1:1000 IHC 1:20-1:200
Source: Rabbit	UNIPROT ID: P78536	
Isotype: IgG	Full Name: ADAM metallopeptidase domain 17	
	Calculated MW: 93 kDa	
	Observed MW: 29 kDa	

Applications

Tested Applications: WB, IHC, ELISA	Positive Controls: WB : human placenta tissue, IHC : human pancreas cancer tissue,
Cited Applications: WB, IF, IHC	
Species Specificity: human	
Cited Species: human	
Note-IHC: suggested antigen retrieval with TE buffer pH 9.0; (*) Alternatively, antigen retrieval may be performed with citrate buffer pH 6.0	

Background Information

The ADAMs (A Disintegrin And Metalloprotease) are multidomain transmembrane proteins. One of the first ADAMs implicated in membrane shedding is ADAM-17, which is shown to release the active form of tumor necrosis factor (TNF)-α from its precursor (PMID:18238782). ADAM17 is also named as CSVP, TACE. The full length protein has 9 glycosylation sites, a signal peptide, propeptide and 2 isoforms produced by alternative splicing. The 120-kDa form of ADAM-17 is expressed more frequently and at higher levels in primary breast carcinomas compared with normal breast tissue (PMID:17438092). The excess mass at 29 kDa predicted for unglycosylated catalytic domain (PMID: 17169570). This antibody is specific to ADAM17.

Notable Publications

Author	Pubmed ID	Journal	Application
Jonathan S. Kurche	36291184	Cells	IF
Wei Li	30569104	Int J Mol Med	WB,IHC

Storage

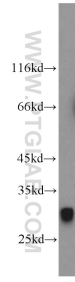
Storage:
Store at -20°C. Stable for one year after shipment.
Storage Buffer:
PBS with 0.02% sodium azide and 50% glycerol pH 7.3.
Aliquoting is unnecessary for -20°C storage

*** 20ul sizes contain 0.1% BSA

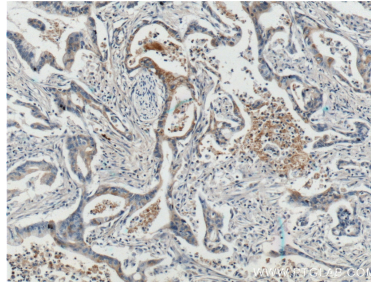
For technical support and original validation data for this product please contact:
T: 1 (888) 4PTGLAB (1-888-478-4522) (toll free in USA), or 1(312) 455-8498 (outside USA)
E: proteintech@ptglab.com
W: ptglab.com

This product is exclusively available under Proteintech Group brand and is not available to purchase from any other manufacturer.

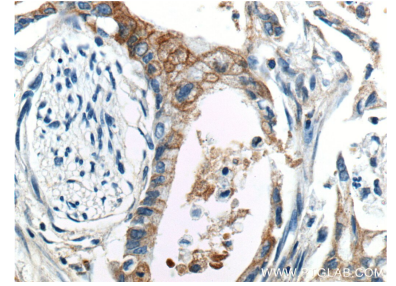
Selected Validation Data



human placenta tissue were subjected to SDS PAGE followed by western blot with 20259-1-AP (ADAM17-Specific antibody) at dilution of 1:500 incubated at room temperature for 1.5 hours.



Immunohistochemical analysis of paraffin-embedded human pancreas cancer tissue slide using 20259-1-AP (ADAM17-Specific Antibody) at dilution of 1:200 (under 10x lens).



Immunohistochemical analysis of paraffin-embedded human pancreas cancer tissue slide using 20259-1-AP (ADAM17-Specific Antibody) at dilution of 1:200 (under 40x lens).