

For Research Use Only

LPHN2 Polyclonal antibody

Catalog Number: 20043-1-AP



Basic Information

Catalog Number: 20043-1-AP	GenBank Accession Number: NM_012302	Purification Method: Antigen affinity purification
Size: 150ul , Concentration: 450 ug/ml by Nanodrop;	GeneID (NCBI): 23266	Recommended Dilutions: IHC 1:50-1:500 IF-P 1:50-1:500
Source: Rabbit	UNIPROT ID: O95490	
Isotype: IgG	Full Name: latrophilin 2	
	Calculated MW: 163 kDa	

Applications

Tested Applications:

IHC, IF-P, ELISA

Species Specificity:

human, mouse

Note-IHC: suggested antigen retrieval with TE buffer pH 9.0; (*) Alternatively, antigen retrieval may be performed with citrate buffer pH 6.0

Positive Controls:

IHC : mouse cerebellum tissue,

IF-P : mouse cerebellum tissue,

Background Information

LPHN2, Latrophilin-2, is a calcium-independent receptor of low affinity for alpha-Latrotoxin which triggers massive exocytosis from neurons and neuroendocrine cells. LPHN2 is a novel receptor of LRG1 that rescues vascular and neurological abnormalities (PMID: 35562586). LPHN2 and LPHN3 serve as postsynaptic recognition molecules in CA1 pyramidal neurons of the hippocampus, localized to Purkinje cells in cerebellum (PMID: 32202499).

Storage

Storage:

Store at -20°C. Stable for one year after shipment.

Storage Buffer:

PBS with 0.02% sodium azide and 50% glycerol pH 7.3.

Aliquoting is unnecessary for -20°C storage

*** 20ul sizes contain 0.1% BSA

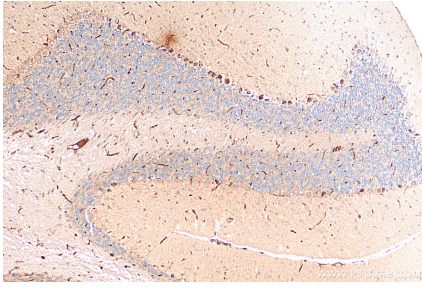
For technical support and original validation data for this product please contact:

T: 1 (888) 4PTGLAB (1-888-478-4522) (toll free in USA), or 1(312) 455-8498 (outside USA)

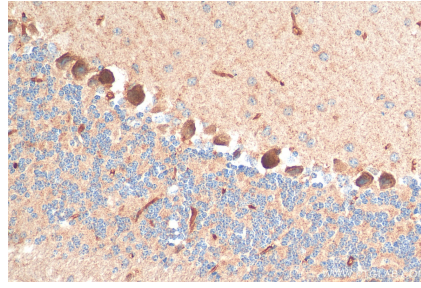
E: proteintech@ptglab.com
W: ptglab.com

This product is exclusively available under Proteintech Group brand and is not available to purchase from any other manufacturer.

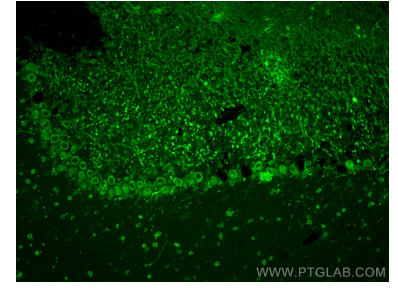
Selected Validation Data



Immunohistochemical analysis of paraffin-embedded mouse cerebellum tissue slide using 20043-1-AP (LPHN2 antibody) at dilution of 1:200 (under 10x lens). Heat mediated antigen retrieval with Tris-EDTA buffer (pH 9.0).



Immunohistochemical analysis of paraffin-embedded mouse cerebellum tissue slide using 20043-1-AP (LPHN2 antibody) at dilution of 1:200 (under 40x lens). Heat mediated antigen retrieval with Tris-EDTA buffer (pH 9.0).



Immunofluorescent analysis of (4% PFA) fixed mouse cerebellum tissue using LPHN2 antibody (20043-1-AP) at dilution of 1:200 and CoraLite® 488-Conjugated Goat Anti-Rabbit IgG(H+L).