

For Research Use Only

CEP72 Polyclonal antibody

Catalog Number: 19928-1-AP

Featured Product

7 Publications



Basic Information

Catalog Number: 19928-1-AP	GenBank Accession Number: BC001750	Purification Method: Antigen affinity purification
Size: 150ul , Concentration: 600 µg/ml by Nanodrop and 253 µg/ml by Bradford method using BSA as the standard;	GeneID (NCBI): 55722	Recommended Dilutions: WB 1:2000-1:12000 IP 0.5-4.0 ug for IP and 1:500-1:2000 for WB
Source: Rabbit	Full Name: centrosomal protein 72kDa	IF 1:10-1:100
Isotype: IgG	Calculated MW: 646 aa, 72 kDa	
Immunogen Catalog Number: AG13905	Observed MW: 72 kDa	

Applications

Tested Applications: IF, IP, WB, ELISA	Positive Controls: WB : HEK-293 cells, mouse testis tissue
Cited Applications: IF, IP, WB	IP : HeLa cells,
Species Specificity: human, mouse	IF : HeLa cells,
Cited Species: human	

Background Information

Notable Publications

Author	Pubmed ID	Journal	Application
Zhenguang Ying	36280838	BMC Biol	WB,IF
Deniz Conkar	31582766	Sci Rep	WB
Tianyu Wu	36395215	Science	IF

Storage

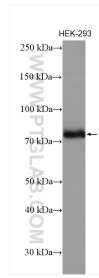
Storage:
Store at -20°C. Stable for one year after shipment.
Storage Buffer:
PBS with 0.02% sodium azide and 50% glycerol pH 7.3.
Aliquoting is unnecessary for -20°C storage

*** 20ul sizes contain 0.1% BSA

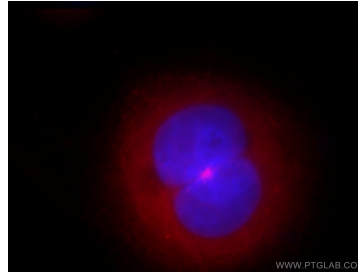
For technical support and original validation data for this product please contact:
T: 1 (888) 4PTGLAB (1-888-478-4522) (toll free in USA), or 1(312) 455-8498 (outside USA)
E: proteintech@ptglab.com
W: ptglab.com

This product is exclusively available under Proteintech Group brand and is not available to purchase from any other manufacturer.

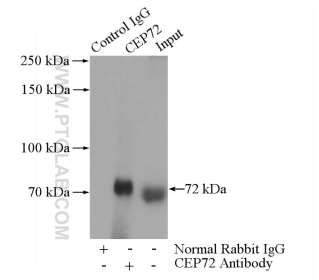
Selected Validation Data



HEK-293 cells were subjected to SDS PAGE followed by western blot with 19928-1-AP (CEP72 antibody) at dilution of 1:6000 incubated at room temperature for 1.5 hours.



Immunofluorescent analysis of HeLa cells, using CEP72 antibody 19928-1-AP at 1:25 dilution and Rhodamine-labeled goat anti-rabbit IgG (red). Blue pseudocolor = DAPI (fluorescent DNA dye).



IP Result of anti-CEP72 (IP:19928-1-AP, 4ug; Detection:19928-1-AP 1:1000) with HeLa cells lysate 520ug.