

For Research Use Only

TLR1 Polyclonal antibody

Catalog Number: 19816-1-AP **6 Publications**



Basic Information

Catalog Number: 19816-1-AP	GenBank Accession Number: BC109093	Purification Method: Antigen affinity purification
Size: 150ul, Concentration: 550 ug/ml by Nanodrop and 333 ug/ml by Bradford method using BSA as the standard;	GeneID (NCBI): 7096	Recommended Dilutions: IHC 1:50-1:500
Source: Rabbit	UNIPROT ID: Q15399	
Isotype: IgG	Full Name: toll-like receptor 1	
Immunogen Catalog Number: AG13852	Calculated MW: 786 aa, 90 kDa	

Applications

Tested Applications: IHC, ELISA	Positive Controls: IHC : human spleen tissue, human small intestine tissue, human tonsillitis tissue
Cited Applications: WB, IHC	
Species Specificity: human, mouse, rat	
Cited Species: human, mouse	
Note-IHC: suggested antigen retrieval with TE buffer pH 9.0; (*) Alternatively, antigen retrieval may be performed with citrate buffer pH 6.0	

Notable Publications

Author	Pubmed ID	Journal	Application
Long Wang	35077844	Pharmacol Res	WB
Tenglin Xu	36541752	Infect Immun	
Madison Rice	36535188	Ann Diagn Pathol	IHC

Storage

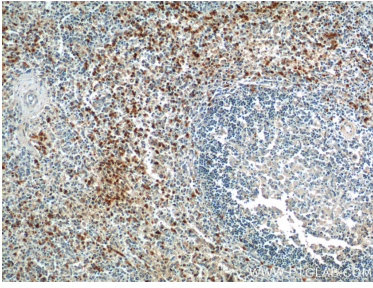
Storage:
Store at -20°C. Stable for one year after shipment.
Storage Buffer:
PBS with 0.02% sodium azide and 50% glycerol pH 7.3.
Aliquoting is unnecessary for -20°C storage

*** 20ul sizes contain 0.1% BSA

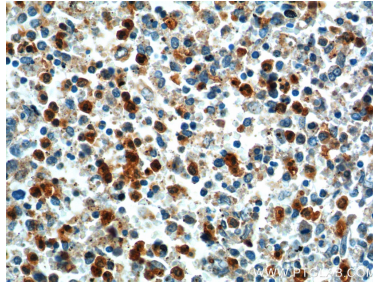
For technical support and original validation data for this product please contact:
T: 1 (888) 4PTGLAB (1-888-478-4522) (toll free in USA), or 1(312) 455-8498 (outside USA)
E: proteintech@ptglab.com
W: ptglab.com

This product is exclusively available under Proteintech Group brand and is not available to purchase from any other manufacturer.

Selected Validation Data



Immunohistochemical analysis of paraffin-embedded human spleen tissue slide using 19816-1-AP (TLR1 Antibody) at dilution of 1:200 (under 10x lens).



Immunohistochemical analysis of paraffin-embedded human spleen tissue slide using 19816-1-AP (TLR1 Antibody) at dilution of 1:200 (under 40x lens).