

For Research Use Only

# Collagen Type XVI Polyclonal antibody

Catalog Number: 19802-1-AP

1 Publications



## Basic Information

<b>Catalog Number:</b> 19802-1-AP	<b>GenBank Accession Number:</b> NM_001856	<b>Purification Method:</b> Antigen affinity purification
<b>Size:</b> 150ul , Concentration: 300 ug/ml by Nanodrop;	<b>GeneID (NCBI):</b> 1307	<b>Recommended Dilutions:</b> WB 1:500-1:3000 IF-P 1:50-1:500
<b>Source:</b> Rabbit	<b>UNIPROT ID:</b> Q07092	
<b>Isotype:</b> IgG	<b>Full Name:</b> collagen, type XVI, alpha 1	
	<b>Calculated MW:</b> 158 kDa	
	<b>Observed MW:</b> 158 kDa	

## Applications

<b>Tested Applications:</b> WB, IF-P, ELISA	<b>Positive Controls:</b> WB : human placenta tissue, IF-P : mouse skin tissue,
<b>Cited Applications:</b> WB	
<b>Species Specificity:</b> human, mouse, rat	
<b>Cited Species:</b> human	

## Background Information

COL16A1, also named as FP1572, belongs to the fibril-associated collagens with interrupted helices (FACIT) family. COL16A1 is involved in mediating cell attachment and inducing integrin-mediated cellular reactions, such as cell spreading and alterations in cell morphology. The antibody is specific to COL16A1.

## Notable Publications

Author	Pubmed ID	Journal	Application
Mancini Mara M	23238588	Aging (Albany NY)	WB

## Storage

**Storage:**  
Store at -20°C. Stable for one year after shipment.  
**Storage Buffer:**  
PBS with 0.02% sodium azide and 50% glycerol pH 7.3.  
Aliquoting is unnecessary for -20°C storage

\*\*\* 20ul sizes contain 0.1% BSA

For technical support and original validation data for this product please contact:

T: 1 (888) 4PTGLAB (1-888-478-4522) (toll free in USA), or 1(312) 455-8498 (outside USA)

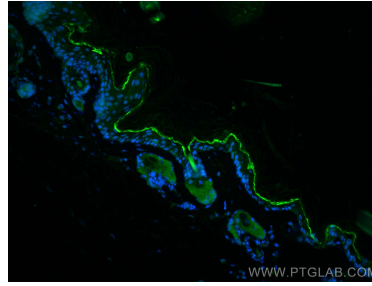
E: [proteintech@ptglab.com](mailto:proteintech@ptglab.com)  
W: [ptglab.com](http://ptglab.com)

This product is exclusively available under Proteintech Group brand and is not available to purchase from any other manufacturer.

## Selected Validation Data



human placenta tissue were subjected to SDS PAGE followed by western blot with 19802-1-AP (Collagen Type XVI antibody) at dilution of 1:1500 incubated at room temperature for 1.5 hours.



Immunofluorescent analysis of (4% PFA) fixed paraffin-embedded mouse skin tissue using Collagen Type XVI antibody (19802-1-AP) at dilution of 1:200 and CoraLite®488-Conjugated AffiniPure Goat Anti-Rabbit IgG(H+L). Heat mediated antigen retrieval with Tris-EDTA buffer (pH 9.0).