

For Research Use Only

Catalase-Specific Polyclonal antibody



Catalog Number: 19792-1-AP

5 Publications

Basic Information

Catalog Number: 19792-1-AP	GenBank Accession Number: NM_001752	Purification Method: Antigen affinity purification
Size: 150ul , Concentration: 400 µg/ml by Nanodrop and 267 µg/ml by Bradford method using BSA as the standard;	GeneID (NCBI): 847	Recommended Dilutions: WB 1:1000-1:4000 IHC 1:20-1:200 IF 1:10-1:100
Source: Rabbit	Full Name: catalase	
Isotype: IgG	Calculated MW: 60 kDa	
	Observed MW: 60 kDa	

Applications

Tested Applications: IF, IHC, WB, ELISA	Positive Controls:
Cited Applications: IHC, WB	WB : HT-1080 cells, HeLa cells
Species Specificity: human	IHC : human hepatocirrhosis tissue,
Cited Species: human, mouse	IF : HeLa cells, HepG2 cells

Note-IHC: suggested antigen retrieval with TE buffer pH 9.0; (*) Alternatively, antigen retrieval may be performed with citrate buffer pH 6.0

Background Information

Catalase belongs to the catalase family. CAT occurs in almost all aerobically respiring organisms and serves to protect cells from the toxic effects of hydrogen peroxide. CAT promotes growth of cells including T-cells, B-cells, myeloid leukemia cells, melanoma cells, mastocytoma cells and normal and transformed fibroblast cells. CAT catalyzes the reaction: $2\text{H}_2\text{O}_2 = \text{O}_2 + 2\text{H}_2\text{O}$. Defects in CAT are the cause of acatalasia (ACATLAS) which also known as acatalasemia. The antibody is specific to CAT.

Notable Publications

Author	Pubmed ID	Journal	Application
BuChun Zhang	35082966	Oxid Med Cell Longev	WB
Feilin Liu	31885808	Oxid Med Cell Longev	WB
Wa Ding	37528233	Acta Pharmacol Sin	WB

Storage

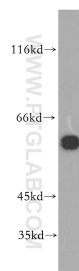
Storage:
Store at -20°C. Stable for one year after shipment.
Storage Buffer:
PBS with 0.02% sodium azide and 50% glycerol pH 7.3.
Aliquoting is unnecessary for -20°C storage

*** 20ul sizes contain 0.1% BSA

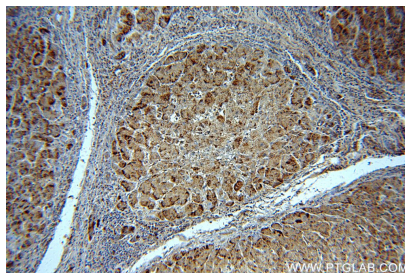
For technical support and original validation data for this product please contact:
T: 1 (888) 4PTGLAB (1-888-478-4522) (toll free in USA), or 1(312) 455-8498 (outside USA)
E: proteintech@ptglab.com
W: ptglab.com

This product is exclusively available under Proteintech Group brand and is not available to purchase from any other manufacturer.

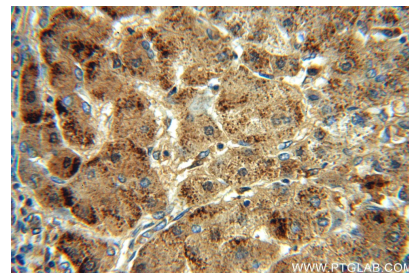
Selected Validation Data



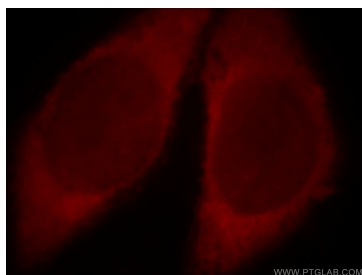
HT-1080 cells were subjected to SDS PAGE followed by western blot with 19792-1-AP (Catalase-Specific antibody) at dilution of 1:1000 incubated at room temperature for 1.5 hours.



Immunohistochemical analysis of paraffin-embedded human hepatocirrhosis using 19792-1-AP (Catalase-Specific antibody) at dilution of 1:100 (under 10x lens).



Immunohistochemical analysis of paraffin-embedded human hepatocirrhosis using 19792-1-AP (Catalase-Specific antibody) at dilution of 1:100 (under 40x lens).



Immunofluorescent analysis of HeLa cells, using CAT antibody 19792-1-AP at 1:25 dilution and Rhodamine-labeled goat anti-rabbit IgG (red).